

Applied Computing Lab Topology

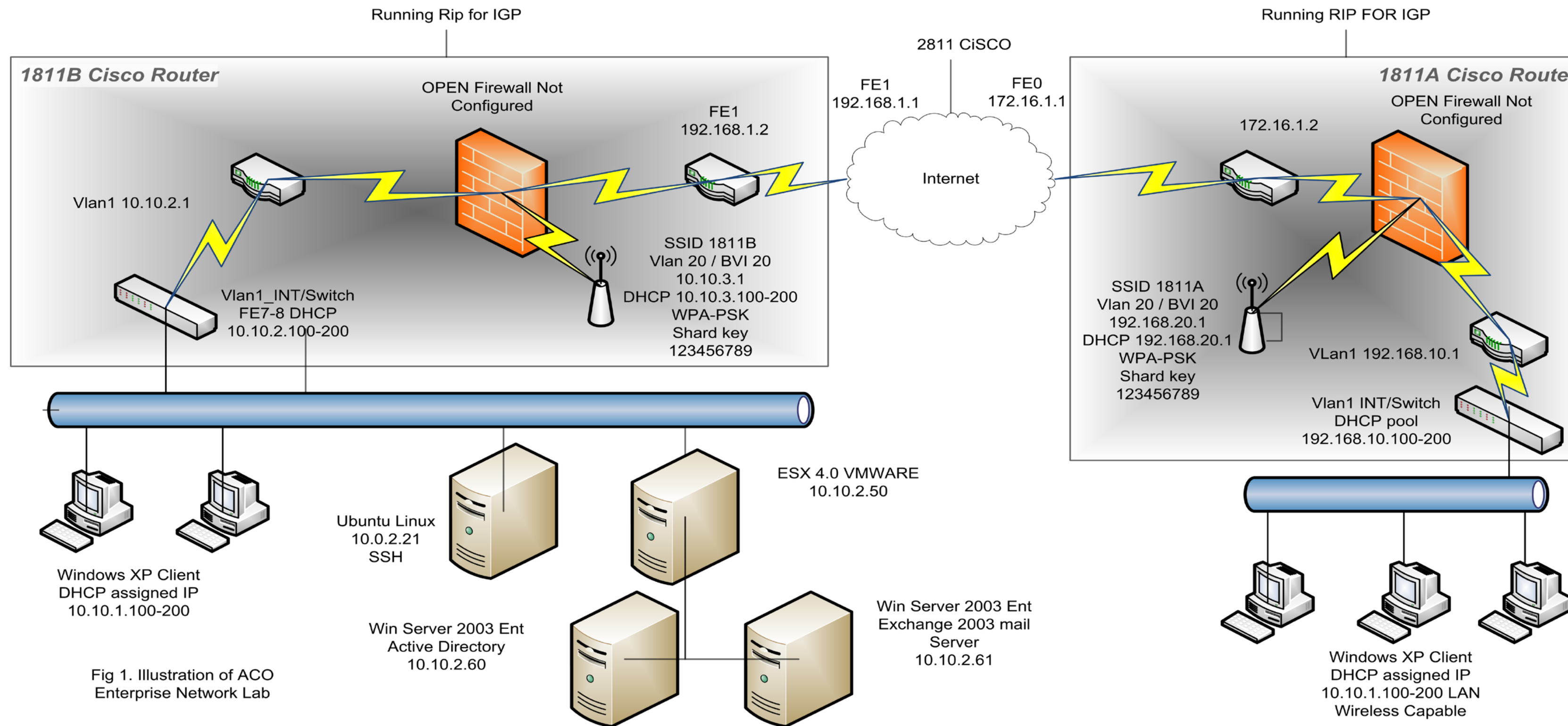


Fig 1. Illustration of ACO Enterprise Network Lab

Network Analysis Tools

- Wireshark LAN packet level parser
- ACO network management packages
- Omnipeek WLAN packet level capture
- Cisco Sight Survey
- Cisco NetFlow SNMP interface management/measurement

Virtual Servers

- VMware ESX 4.0
 - Enterprise Level Domain Architecture
 - Windows 2003 Active directory server
 - Windows 2003 with Exchange 2003
 - VMware Image repository for lab environment templates
- VMware server
 - Host Linux client/server OS configurations

Enterprise Network

The ACO lab has the capabilities to mimic enterprise level networking and application infrastructures with technologies such as:

Interconnect:

- VPN, SSH, IPSEC, HTTP, DNS, DHCP, Firewall, Intrusion detection/prevention, Site to Site VPN, Wireless A/B/G communications

Client/Server and Peer to Peer application models

- Enterprise level domain infrastructure, LDAP (AD), SMTP (email), Web/FTP servers, remote invocation, network monitoring.. Etc.

Wireless Network

- WLAN Network:
 - 802.11a,b,g, handoff, WPA/WPA2, WEP
- Sensor Network:
 - MOTES, Programmable interface

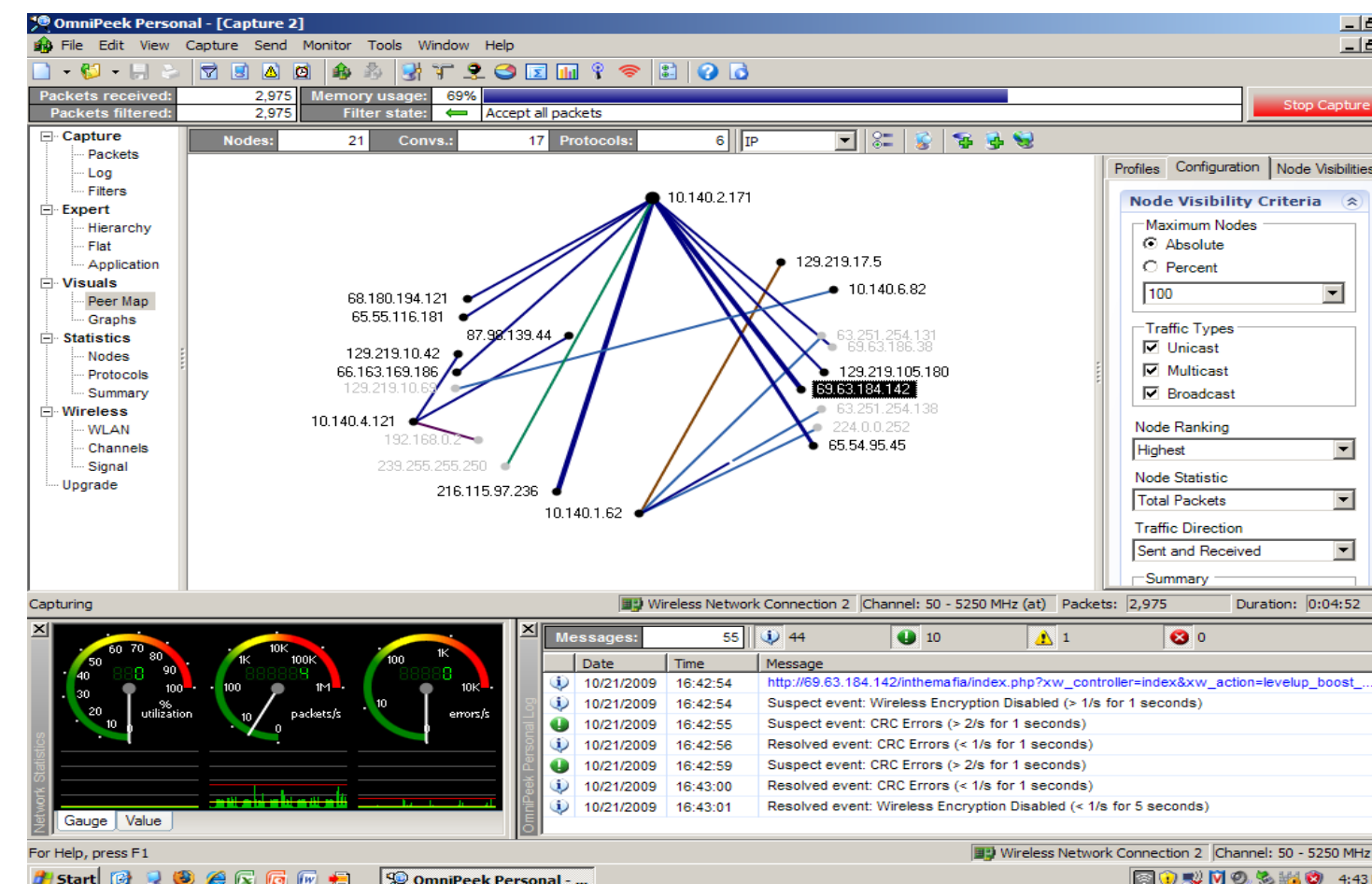


Fig 2. Wireless packet analyzer

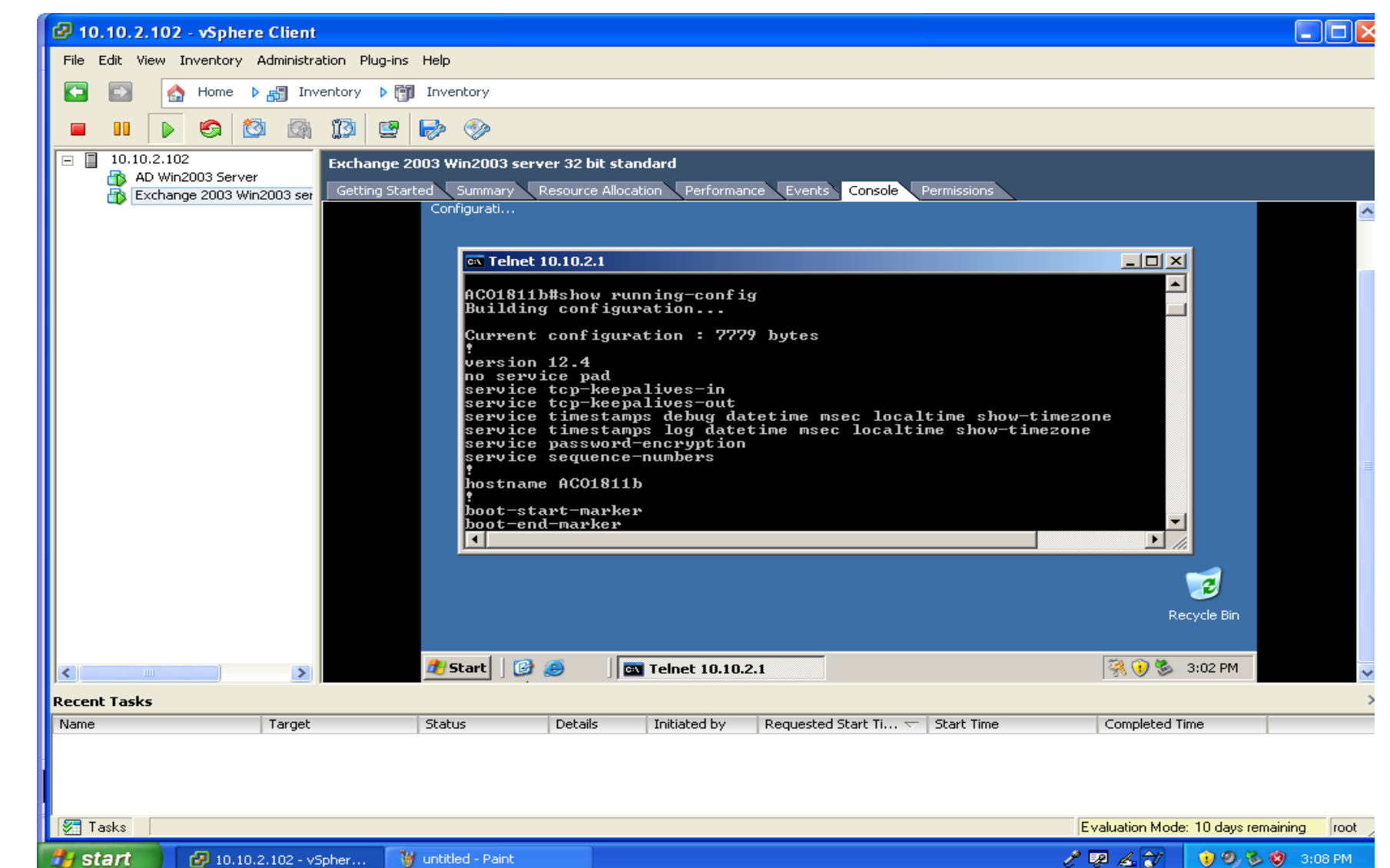


Fig 3. VMware Sphere client console connected to Windows 2003 server running telnet connection to Cisco 1811 router