

# Test4b



Speaking Proficiency English Assessment Kit



Do Not Turn The Page Until  
You Are Told To Do So. ►

SPEAK is produced by the Test of English as a Foreign Language program.

## GENERAL DIRECTIONS

In this test you will be able to demonstrate how well you speak English. The test will last approximately twenty minutes. You will be asked questions by an interviewer. The questions are printed in the test book, and the time you will have to answer each one is printed in parentheses after the question. You are encouraged to answer the questions as completely as possible in the time allowed. While most of the questions on the test may not appear to be directly related to your academic or professional field, each question is designed to tell the raters about your oral language ability. The raters will evaluate how well you communicate in English.

As you speak, your voice will be recorded. Your score for the test will be based on your speech sample. Be sure to speak loudly enough for the machine to record clearly what you say. Now please start your tape recorder so that it will record what you say. Your tape recorder should now be running and recording. Do not stop your tape recorder at any time during the test. If you have a problem with the tape recorder, notify the test supervisor immediately.



Copyright © 1998 by Educational Testing Service. All rights reserved.

EDUCATIONAL TESTING SERVICE, ETS, the ETS logo, and SPEAK are registered trademarks of Educational Testing Service. The SPEAK logo is a trademark of Educational Testing Service. The modernized ETS logo is a trademark of Educational Testing Service.

Now the interviewer will ask you three questions. These questions are for practice and will not be scored, but it is important that you answer them.

What is the weather like today? (10 seconds)

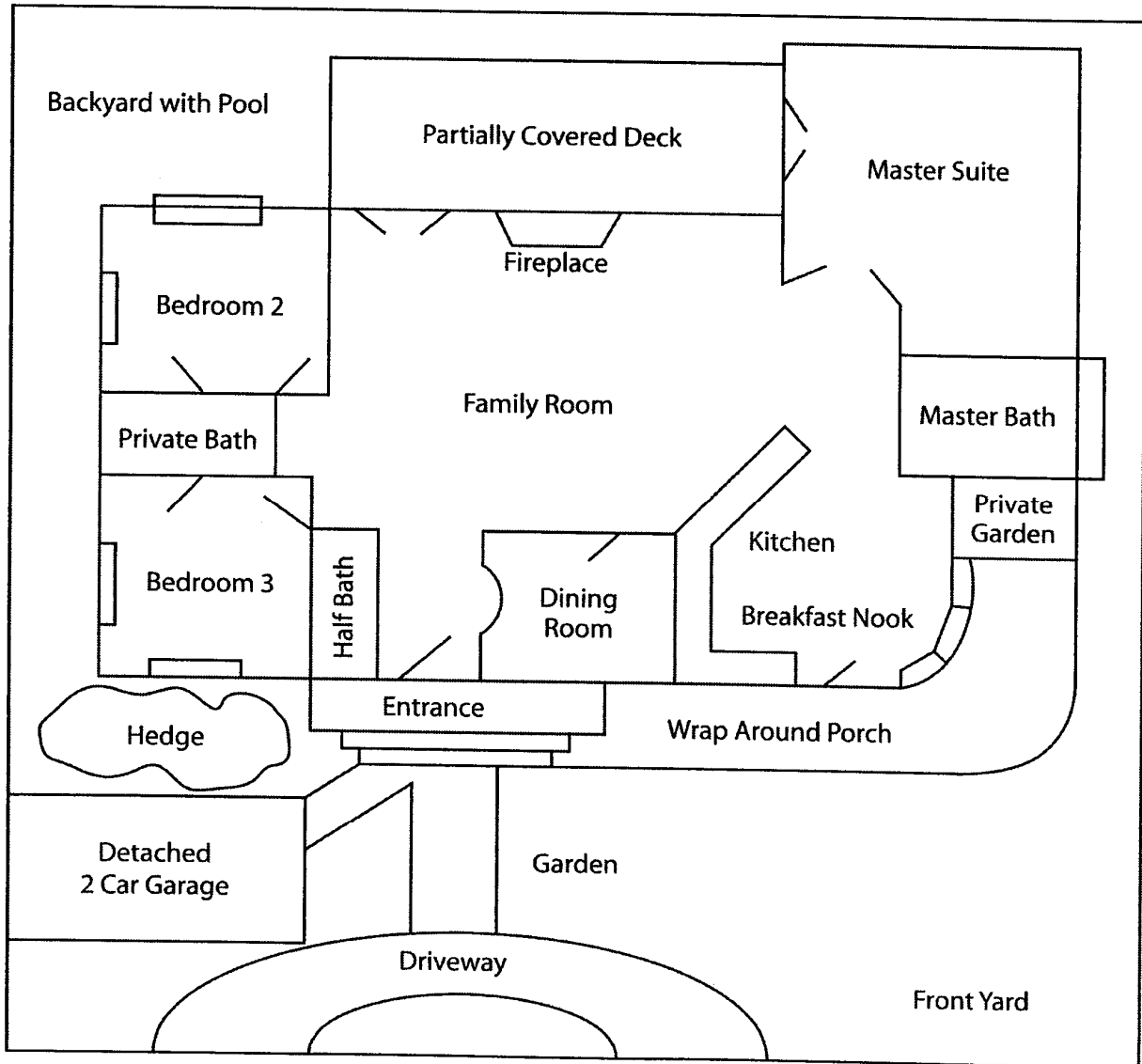
Do you have brothers or sisters? (10 seconds)

What is your field of study? (10 seconds)

Now the test will begin. Be sure to speak clearly and say as much as you can in responding to each question.



I am an old friend from college who will be visiting you in your new house this weekend. A map of the house appears below. Please take 30 seconds to study the map.



↘ = entrances and exits      ◻ = windows

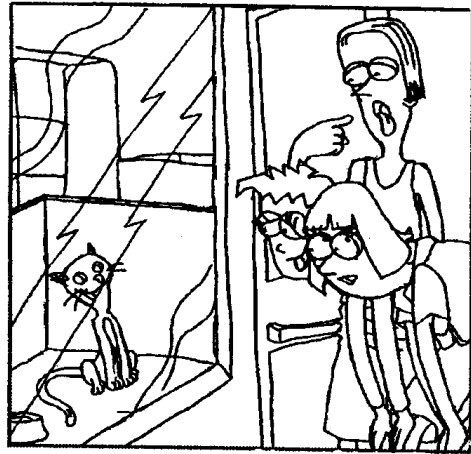
1. When I arrive, I want to explore your property. Please tell me how to get from the front yard to the backyard. (30 seconds)
2. You have many video and DVDs in your collection. Recommend a movie for me to watch. (30 seconds)
3. This house features a front and a back yard, 2 1/2 baths, and 3 bedrooms. What is a typical home in your country? (60 seconds)
4. In the United States, most children leave home when they are eighteen years old, often before they are married. In many other countries, children live at home with their parents until the child is married or goes to college. What are the advantages and disadvantages of both practices? (60 seconds)



Now please look at the six pictures below. I'd like you to tell me the story that the pictures show, starting with picture number 1 and going through picture number 6. Please take one minute to look at the pictures and think about the story. Do not begin the story until I tell you to do so.



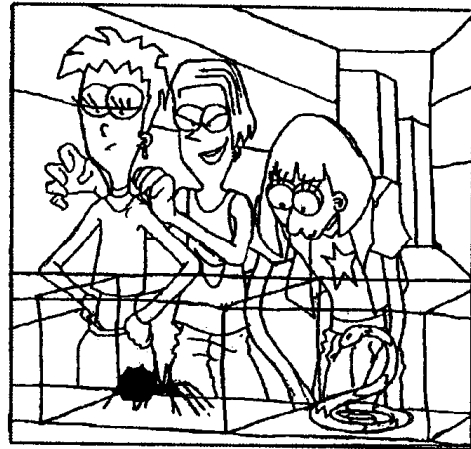
1



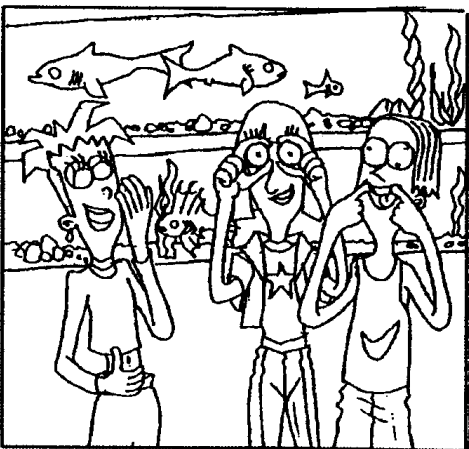
2



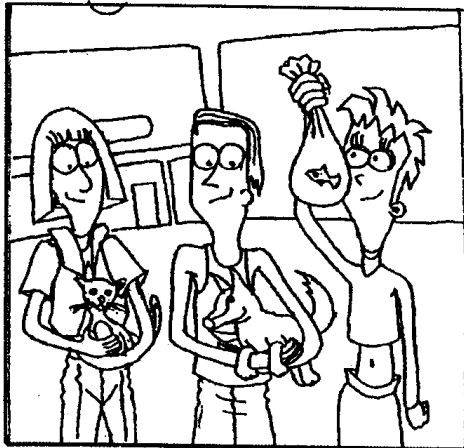
3



4



5



6

5. Please tell the story that the pictures show. (60 seconds)
6. Imagine that you are one of the people in the story. The Pet Shop does not smell very clean. Complain to the manager about the smell of the Pet Shop. (45 seconds)
7. Many parents do not want their children to have pets. Others claim that pet ownership teaches children responsibility. What are the pros and cons of children having pets? (60 seconds)



Now I'd like to hear your ideas about several topics. Be sure to say as much as you can in responding to each question. After I ask each question, you may take a few seconds to prepare your answer, and then begin speaking when you're ready.

8. My daughter is considering a career in your field. What is the status of women as professionals in you field of study? (60 seconds)

---

9. The U.S. justice system incarcerates criminals in prisons, but it tries to rehabilitate criminals by providing work and education. What is your opinion about rehabilitating criminals? (60 seconds)

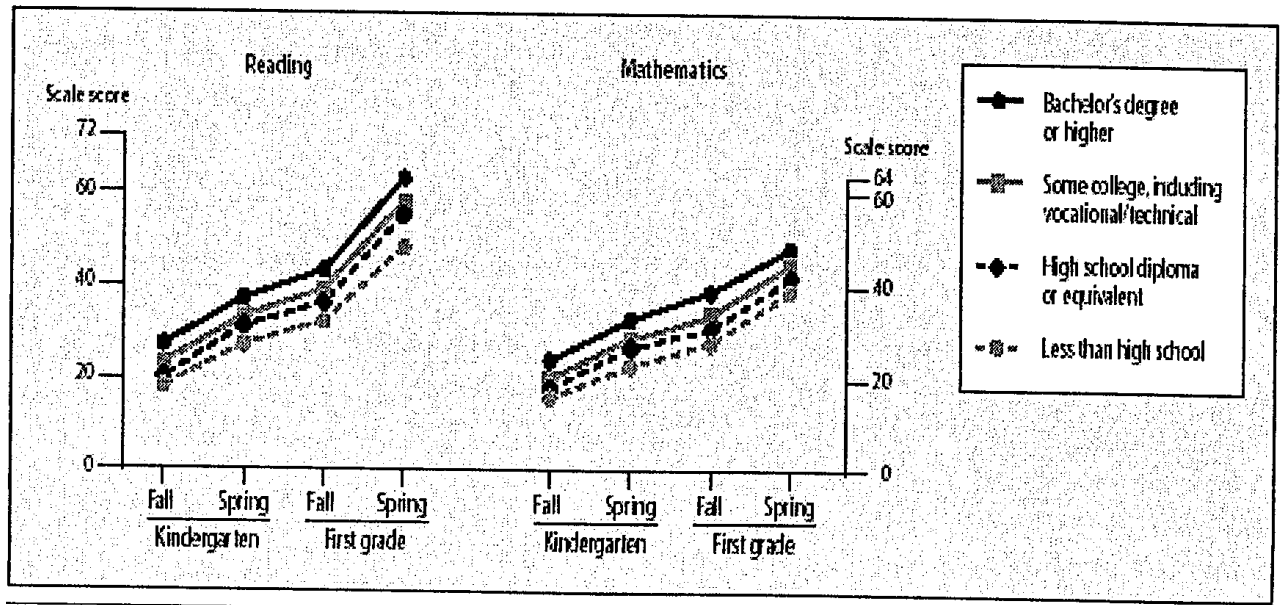
---

10. What do you think will be the most important contribution to society you will make in your lifetime? (60 seconds)

---

11. Below is a graph. Although I can see the information in the graph, I would like for you to explain the information to me. (60 seconds)

**Children's overall reading and mathematics performance from kindergarten through first grade, by mother's highest level of education: 1998–2000**





12. You are Committee Chair of Faculty in your department. At the last faculty meeting, you handed out a schedule of events for the New Student Welcome Picnic. Since that time, there have been some changes made to the schedule. You need to review the schedule, as well as note the changes that have been made. Do not just read the announcement, but present the information as though you were speaking to an audience. You will have 60 seconds to study the announcement. Do not begin speaking until you are told to do so. (90 seconds)

## **Faculty Meeting: New Student Welcome Picnic**

**When:** Friday, September 5th, 4:00-7:00

**Where:** ~~Central Lawn~~

**Plaza West**

**Schedule:**

4:00 — Welcome Speech, Dr. Nelson, ~~Grad. Coord.~~

**Chair**

4:30 — Introductions (faculty, undergrads, grads)

5:15 — Food and Libations!\*

6:00 — ~~Volleyball: Undergrads vs. Grads~~

**Ultimate Frisbee**

6:45 — Clean up

\* Must be 21 years old to drink — please bring I.D.!