

## Redware sourcing, Yautepec

Michael E. Smith, 12/13/2006

This document contains photos of guinda (redware) sherds from Yautepec that were sourced by Leah Minc by INAA. Her description of the analysis, with tables and figures, is found in her chapter in the Yautepec informe, which will be published by the Univ. of Pittsburgh monograph series at some point. Her chapter is:

- Capítulo D3: La Cerámica Guinda de Yautepec: Composición Oligoelemental por Activación Neutrónica, by Leah D. Minc. IN:
- Smith, Michael E. (editor) 2006 *Excavaciones de casas postclásicas en la zona urbana de Yautepec, Morelos: informe final*. 2 vols. Report submitted to the Consejo de Arqueología, Instituto Nacional de Antropología e Historia.
- Smith, Michael E. (editor) n.d. *Excavaciones de casas en la ciudad azteca de Yautepec, Morelos, México / Residential Excavations in the Aztec-Period City of Yautepec, Morelos, Mexico*. University of Pittsburgh Memoirs in Latin American Archaeology (in press) .

Minc's analysis is also described in:

- Hare, Timothy S., and Leah D. Minc n.d. The Spatial and Temporal Positions of Red Wares (Guindas) in the Aztec Provincial Economy. In *The Archaeology of Production, Distribution, and Consumption in Postclassic Central and Western Mexico: Contributions from Materials Composition Analysis*, edited by Thomas H. Charlton, Deborah L. Nichols, and Hector A. Neff. (book in preparation).

The purpose of this document is to show how the sherds themselves (color photos) were classified into compositional groups. Minc's chapter has the detailed data and the aggregate results, but it is difficult to get an idea of how the visual characteristics of the sherds relate to the compositional groups. These illustrations and data were assembled by Caitlin Guthrie. (ASU student)

### Compositional Groups:

These are the groups defined by Minc. The letter codes are used in this document.

### CE numbers:

These refer to specific exported samples. In summary:

<b>Basin of Mexico:</b>	Tenochtitlan Region	B1
	Texcoco Region	B2
	Chalco Region	B3
	Mixed Affiliation	B4
<b>Morelos:</b>	Greater Yautepec	M1
	Western Morelos	M2
<b>Other:</b>	Extreme Outlier	O1
	Unassigned	O2

CE-4 & CE-7: Excavated by Smith, Yautepec, 1993.

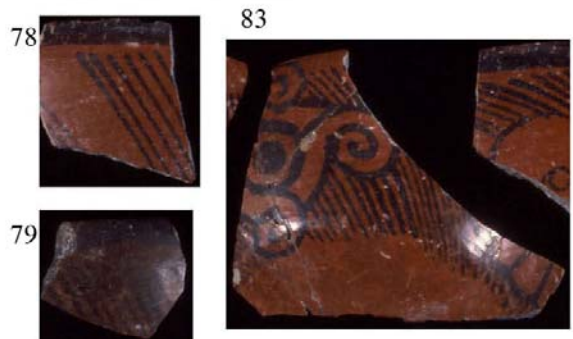
CE-8: Surface collected or excavated by Hare & Montiel, Yautepec Valley survey, 1994 and 1996.

### Types:

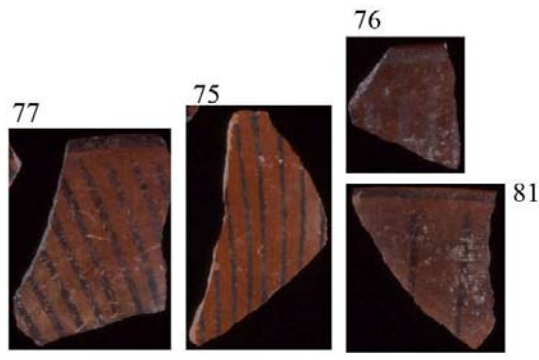
19B – 19I are types in my classification of Morelos redwares. 19K is a composite type used by Timothy Hare to designate redware sherds with complex decoration.

**19B**

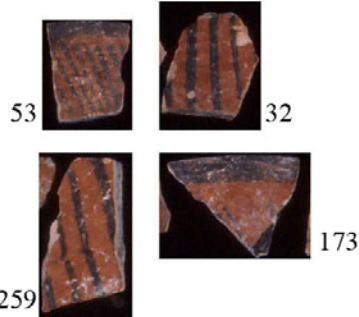
**Basin of Mexico**



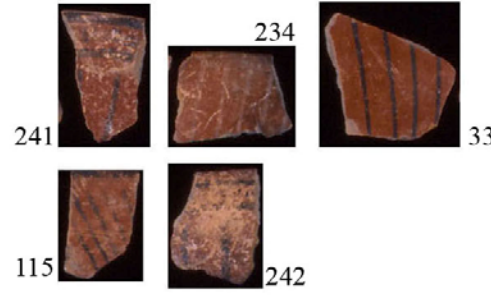
19B-GROUP B1 CE7



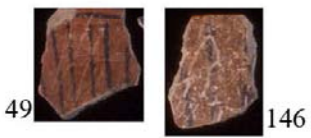
19B-GROUP B3 CE7



19B-GROUP B1 CE8



19B-GROUP B3 CE8



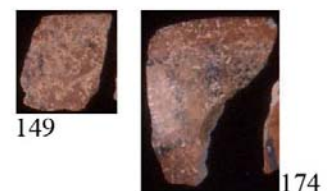
19B-GROUP B4 CE8

**Other**



19B-GROUP 01 CE8

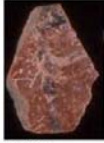
**Morelos**



19B-GROUP M1 CE8

**19C**

Basin of Mexico



236



114



235

19C-GROUP B3 CE8

Other



19C-GROUP O1 CE8

132

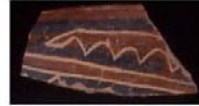


101

19C-GROUP O2 CE7

**19D**

Basin of Mexico



20

19D-GROUP B3 CE8

**19E**

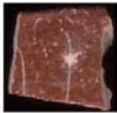
Basin of Mexico



238

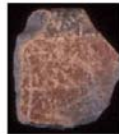
19E-GROUP B3 CE8

Other



148

19E-GROUP O1 CE8

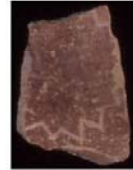


169

19E-GROUP O2 CE8

**19F**

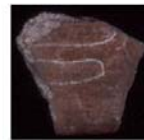
Basin of Mexico



247

19F-GROUP B3 CE8

Morelos



94

19F-GROUP M1 CE7

### 19H

#### Basin of Mexico



43

19H-GROUP B2 CE8



107

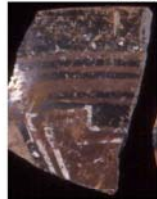
19H-GROUP B1 CE7

#### Other

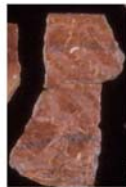


37

19H-GROUP O2 CE8



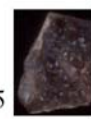
156



179

19H-GROUP O1 CE8

#### Morelos



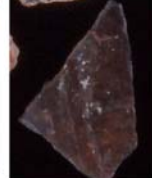
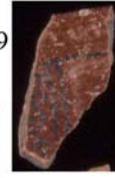
95



100

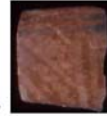
19H-GROUP M1 CE7

129

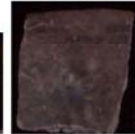


123

122

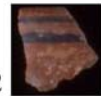


39



45

42



19H-GROUP M1 CE8

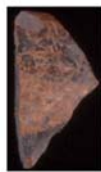
### 19I

#### Basin of Mexico



110

19I-GROUP B1 CE8



175

19I-GROUP B2 CE8

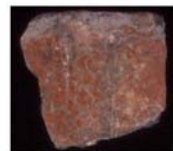


109

19I-GROUP B3 CE8

### 19J

#### Other



263

19J-GROUP O1 CE8

#### Other



24

19I-GROUP O2 CE8

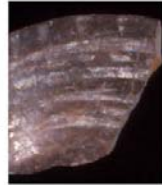
# 19K

## Basin of Mexico

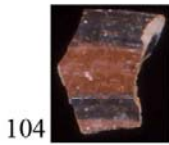
112



102



168



104



129

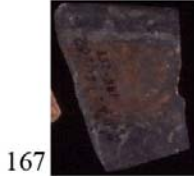


155 (I)



35

19K-GROUP B2 CE8



167



159



155 (E)

19K-GROUP B1 CE7

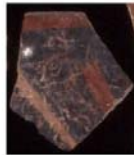
29



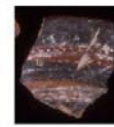
26



244



171



103



15



131



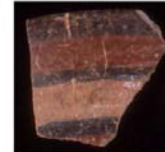
118



117

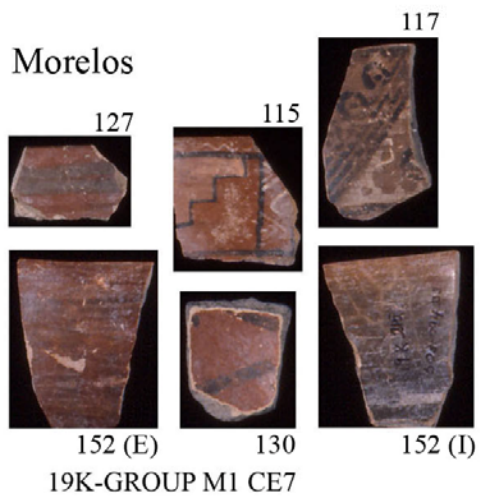
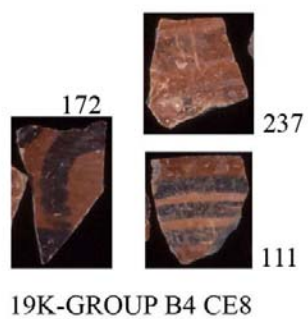
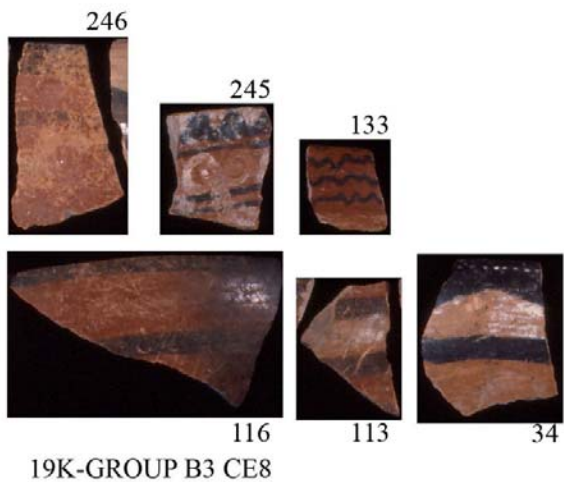
19K-GROUP B1 CE8

162

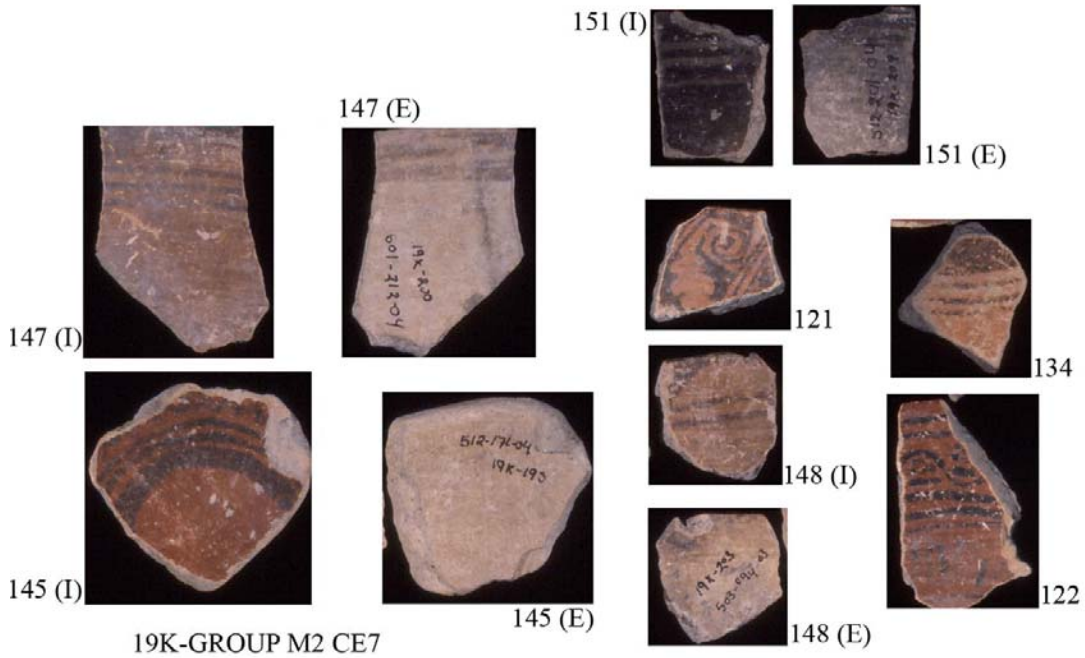
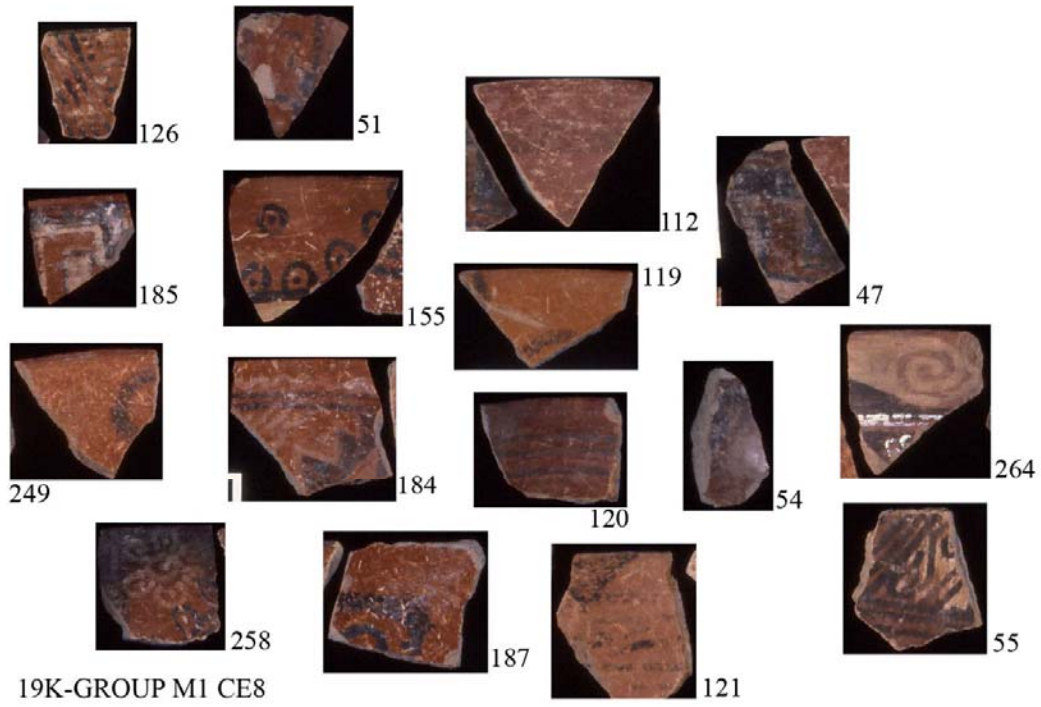


108

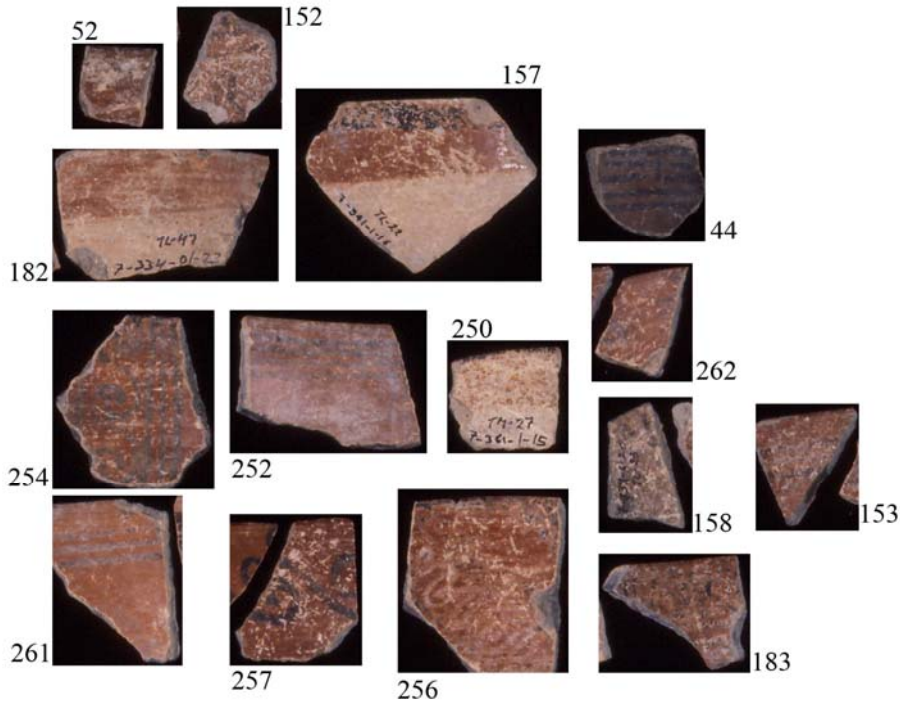
19K-GROUP B3 CE7





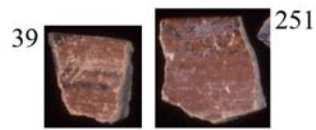


**Morelos**

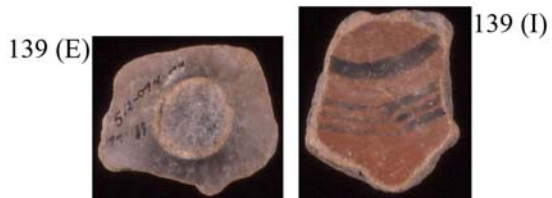


19K-GROUP M2 CE8

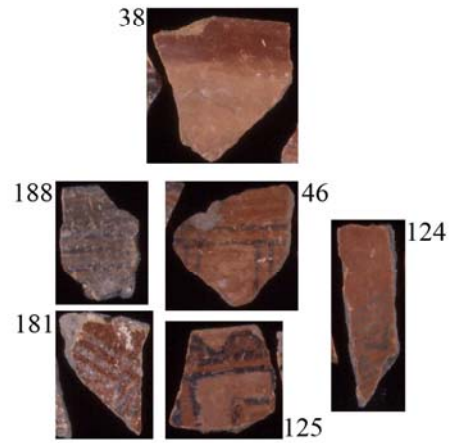
Other



19K-GROUP O1 CE8



19K-GROUP O2 CE7



19K-GROUP O2 CE8