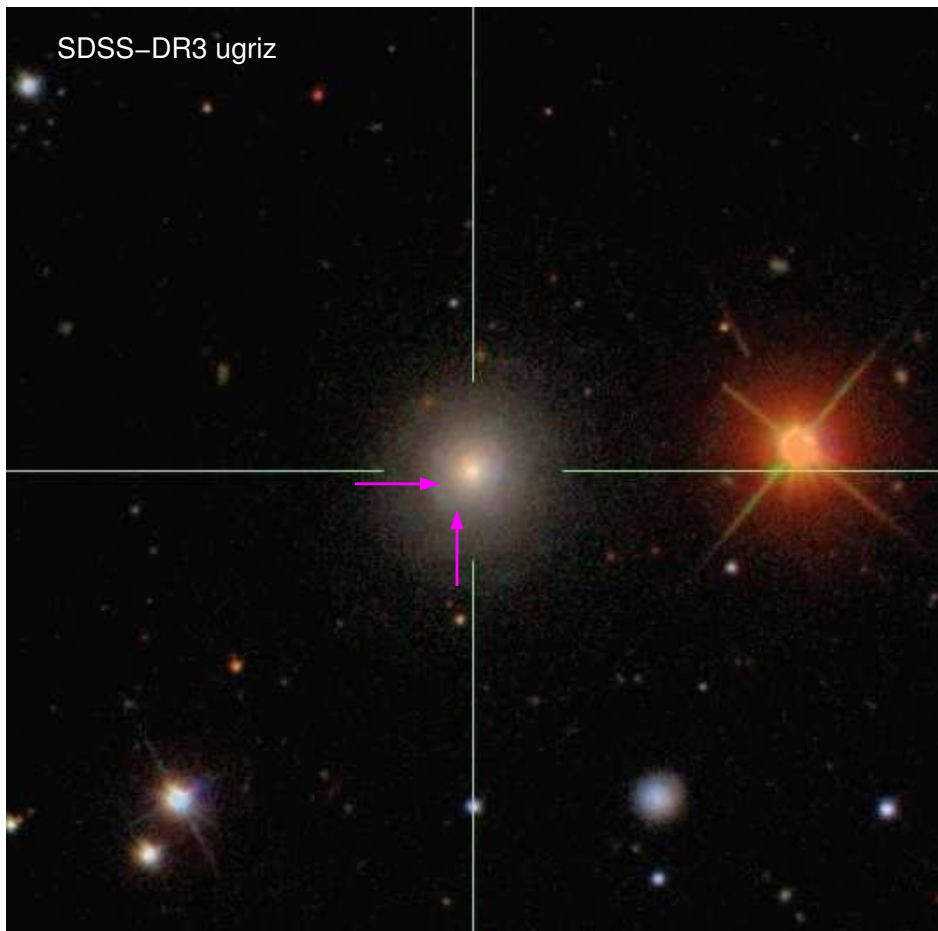
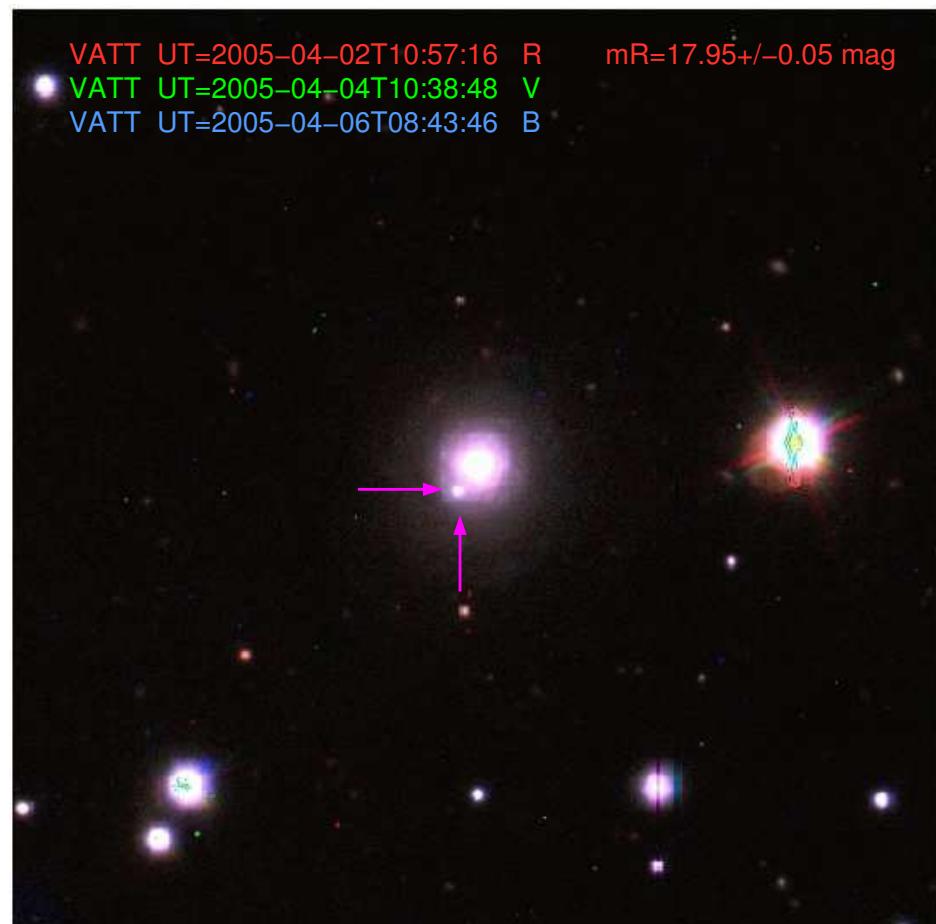


SN in galaxy CGCG 223-029



Host galaxy: 16:02:16.63 +42:55:00.9 J2000.0
Supernova: 16:02:17.04 +42:54:55.3 J2000.0 (4.5" E, 5.6" S of nucleus)

Dimensions of finding chart: ~3.5'x3.5'
Orientation: N up and E to the left



**Discoverers: Rolf A. Jansen, Kazuyuki Tamura (ASU)
& Norman A. Grogin (JHU)**

VATT = Vatican Advanced Technology Telescope, Mt. Graham (AZ)
SDSS-DR3 = Sloan Digital Sky Survey - Data Release 3