

Figure 16. *Linea divisoria*, circa 1955. This view, while similar to that in figure 15, was actually taken several years later, because the Mexican garita at the main gate is the same flat-roofed structure pictured in figure 14, and the new Safeway store is visible to the right of the U.S. Customs and Immigration Station. With the new emphasis on automobile tourism through Ambos Nogales, the curio district of Nogales, Sonora, shifted west from Calle Elías to Calle Campillo, and eventually, to Avenida Obregón. The Marcos de Niza Hotel on the corner of Calle Campillo and Avenida Obregón became a beacon drawing pedestrian and automotive tourists to a new district of the border town that only a decade earlier had been primarily a residential zone.

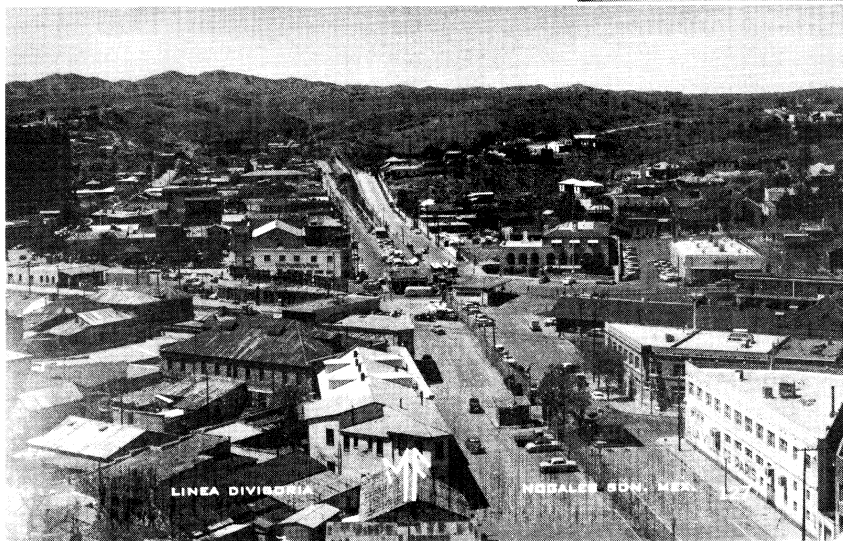


Figure 17. Morley gate crossing, circa 1960, looking north along Morley Avenue with the Mexican garita and U.S. gatehouse on the right. One of the 1929 masonry pillars has been removed (cf. figure 10), and a sign at the lower left as well as the sliding gate suggest that this crossing actually closes during certain hours. This implies that the Morley Avenue shopping scene was chiefly a daytime activity by the 1960s. The signature Eiffel Tower sign of Ville de Paris and signs for Valley National Bank, Kress, and the El Paso Store are visible along Morley.