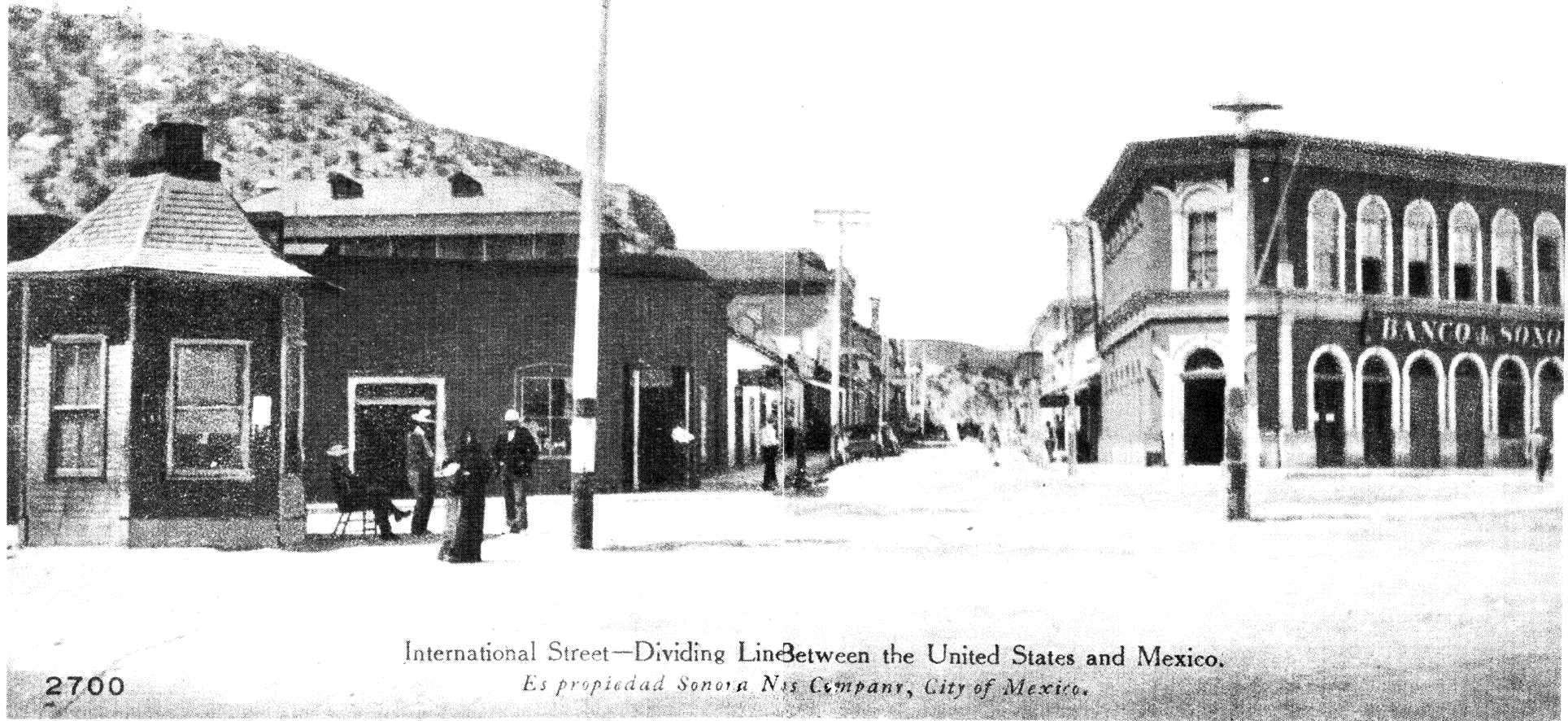


Figure 4. International Street looking south at Calle Elías, circa 1908. No fence is visible in this ground-level view of the buffer zone. A Mexican kiosk, telephone poles, and a single boundary marker define the border, which extends across the lower portion of the postcard view creating a triangular building, the Banco de Sonora, at right.



International Street—Dividing Line Between the United States and Mexico.
Es propiedad Sonora Nis Company, City of Mexico.

2700