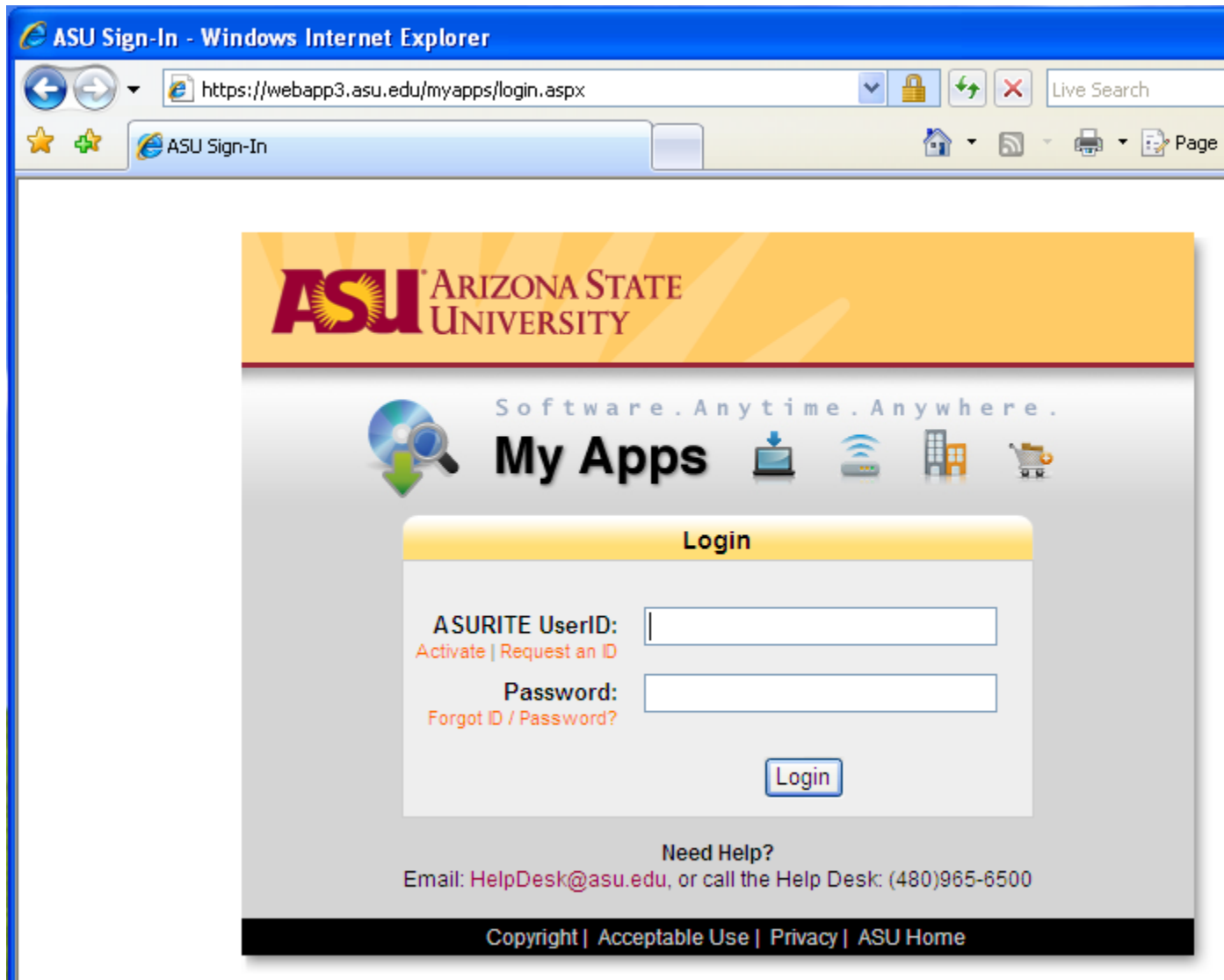


# **Using Matlab on ASU's application server**

**(For those who have never used it before)**

(Prepared by HPH, Aug 2009)

# 1. Login My Apps (or <https://apps.asu.edu>) using ASURITE password



The screenshot shows a Windows Internet Explorer browser window titled "ASU Sign-In - Windows Internet Explorer". The address bar displays the URL <https://webapp3.asu.edu/myapps/login.aspx>. The browser's address bar also shows "ASU Sign-In" as a search suggestion. The main content area features the ASU logo and the text "ARIZONA STATE UNIVERSITY". Below the logo, the tagline "Software . Anytime . Anywhere ." is displayed. The "My Apps" section includes a magnifying glass icon and several application icons. The "Login" form contains two input fields: "ASURITE UserID:" with a link for "Activate | Request an ID" and "Password:" with a link for "Forgot ID / Password?". A "Login" button is positioned below the password field. At the bottom of the page, there is a "Need Help?" section with the email [HelpDesk@asu.edu](mailto:HelpDesk@asu.edu) and the phone number (480)965-6500. The footer contains links for "Copyright | Acceptable Use | Privacy | ASU Home".

## 2. Select "Matlab R2007b" or later versions

**My Apps** Beta

Free software.  
Anytime. Anywhere.

My Apps

Need space to save your files?  
Use 4 GB of free storage on:

**My Files**

**Search for Software**

In Category


**Tip:** To See all software within a category, leave search field blank

**Most Popular Apps**

- 1 Matlab R2007b**  
Mathematics & Statistics
- 2 MS Word 2007**  
Word Processing
- 3 MS Access 2007**  
Database & Spreadsheet
- SPSS 16 (Win)**

*This* (with red arrow pointing to the first item in the list)


### 3. You may have more than one choices. Matlab R2007b should work fine.



Free software.  
Anytime. Anywhere.

My Apps

Need space to save your files?  
Use 4 GB of free storage on:



My Files

Most Popular Apps

- 1 **Matlab R2007b**  
Mathematics & Statistics
- 2 **MS Word 2007**  
Word Processing
- 3 **MS Access 2007**  
Database & Spreadsheet
- 4 **SPSS 16 (Win)**

Search for Software

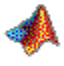




In Category

**Tip:** To See all software within a category, leave search field blank

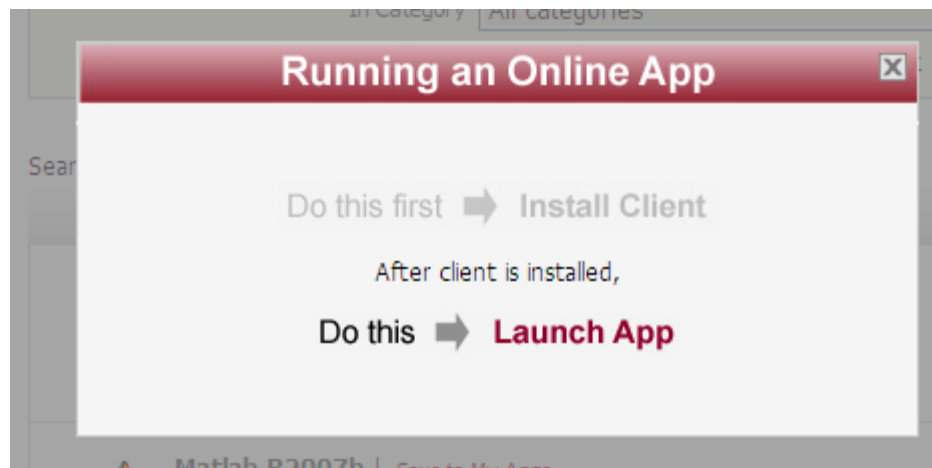
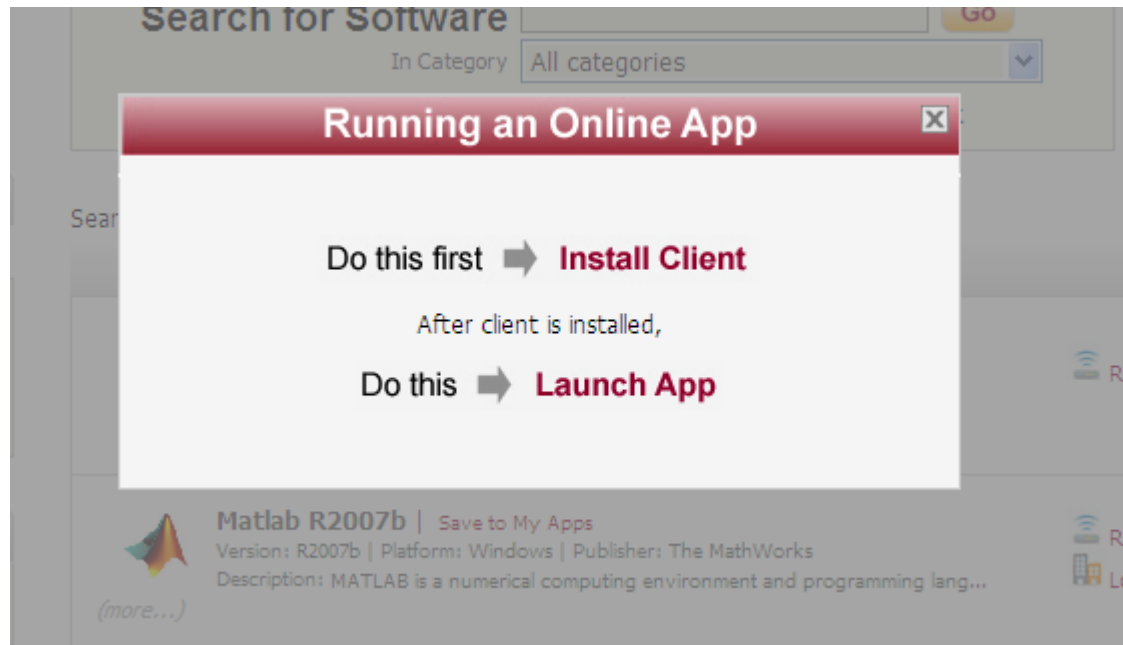
[View demo](#) [PC](#)

Search results for: **Matlab R2007b**. 2 items found.

**Details**

	<b>GPH371 Matlab R2007b</b>   <a href="#">Save to My Apps</a> Version: 0   Platform: Windows   Publisher: Online App Description: GPH371 Matlab R2007b	 <a href="#">Run App now</a>
 <i>(more...)</i>	<b>Matlab R2007b</b>   <a href="#">Save to My Apps</a> Version: R2007b   Platform: Windows   Publisher: The MathWorks Description: MATLAB is a numerical computing environment and programming lang...	 <a href="#">Run App now</a>  <a href="#">Locate App on Campus</a>

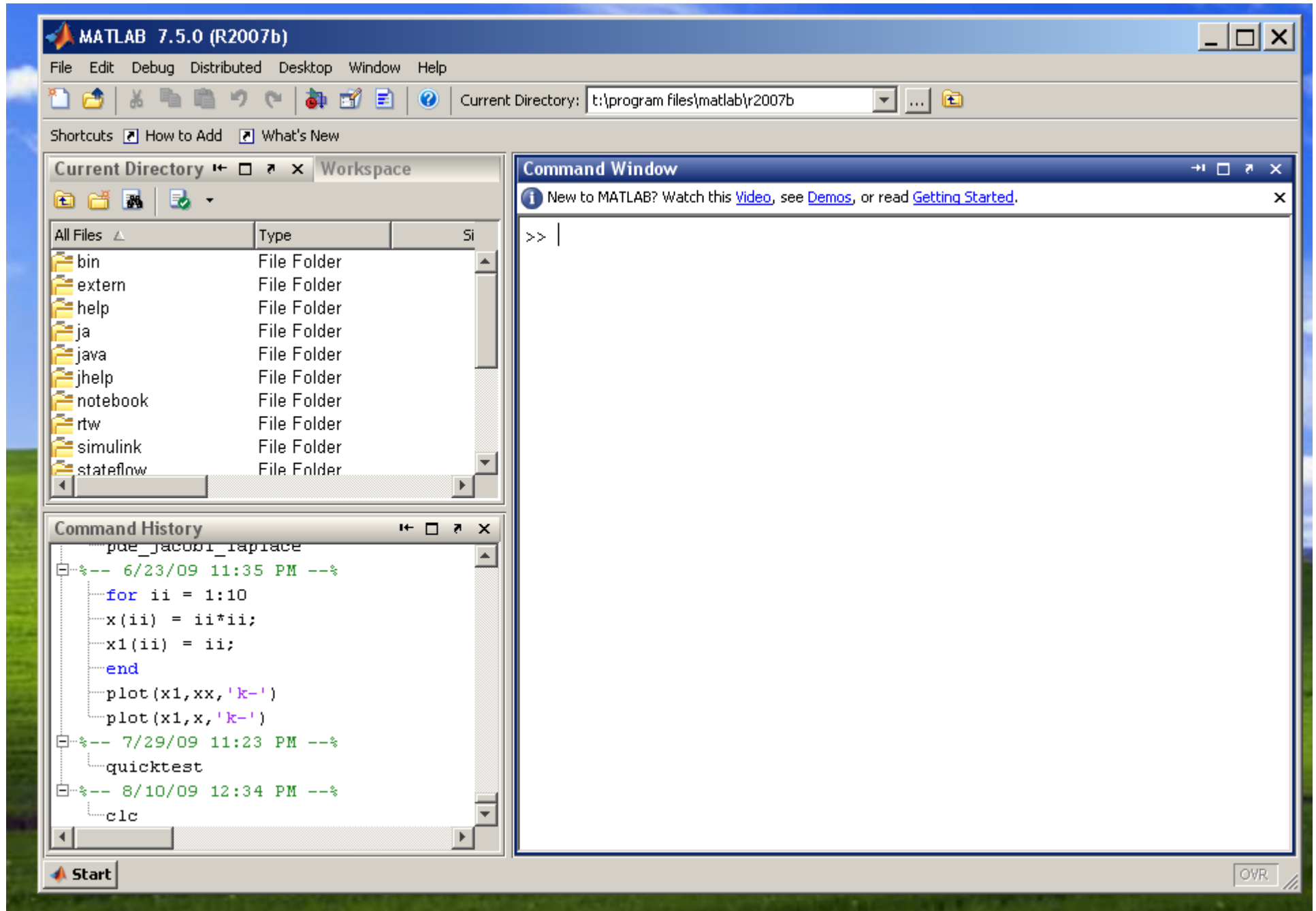
**4. First-time user might be asked to "Install Client". Install it, then launch the application.  
(This is for first-time users only.)**



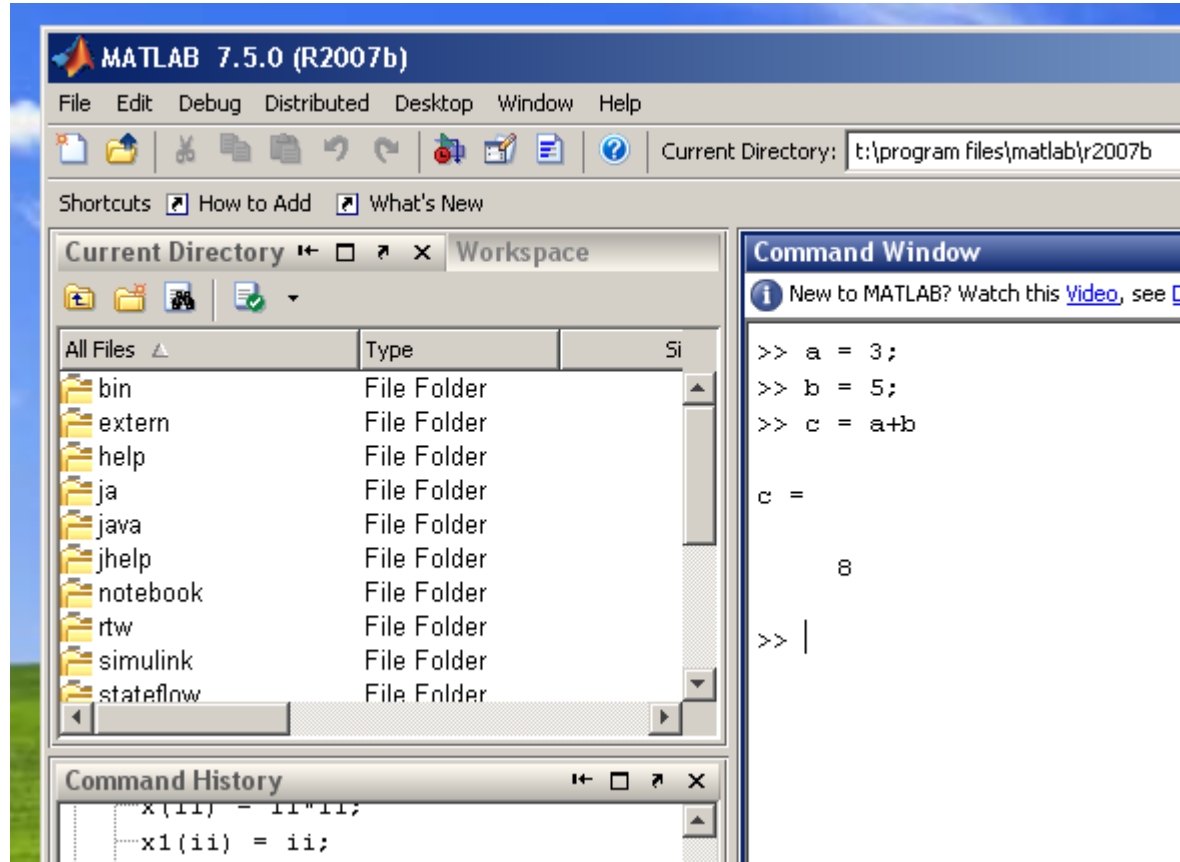
**5. Hit Continue at this prompt. There's not much you can do.**



## 6. The main Matlab window

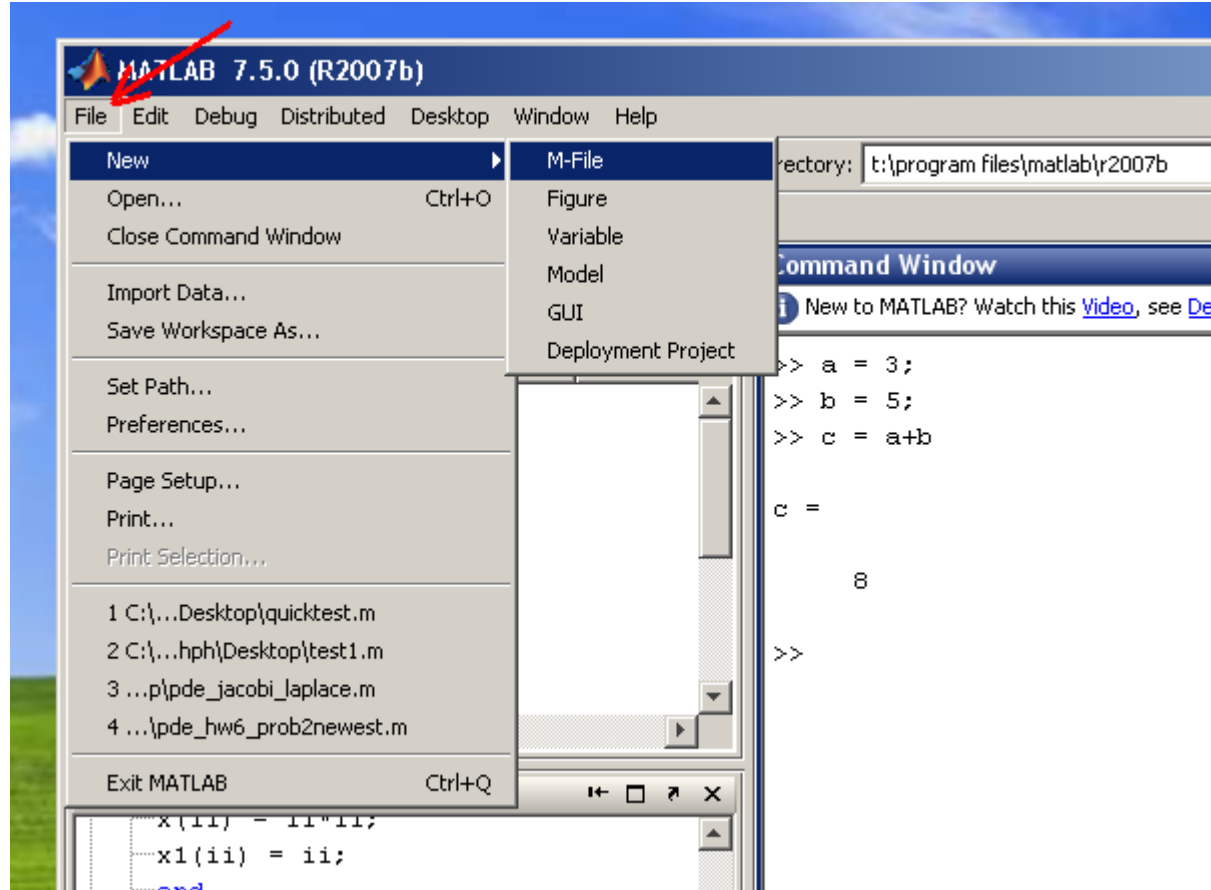


## 7. A quick example using the interactive mode

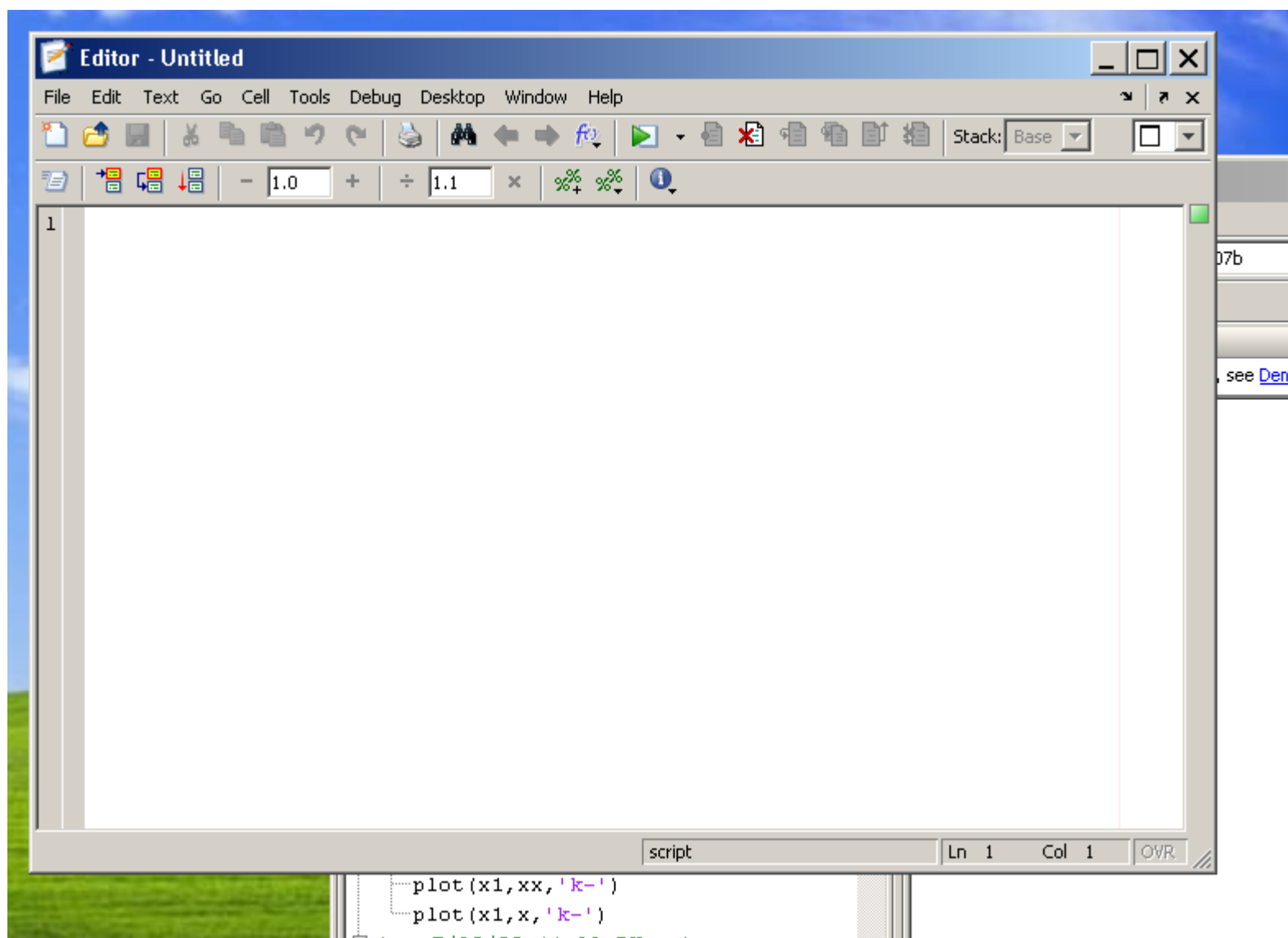




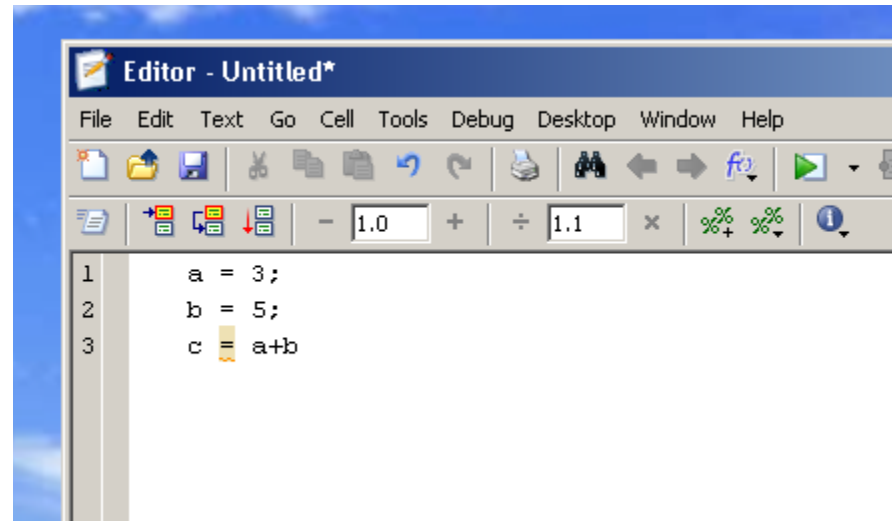
## 8. Edit an "M-file"



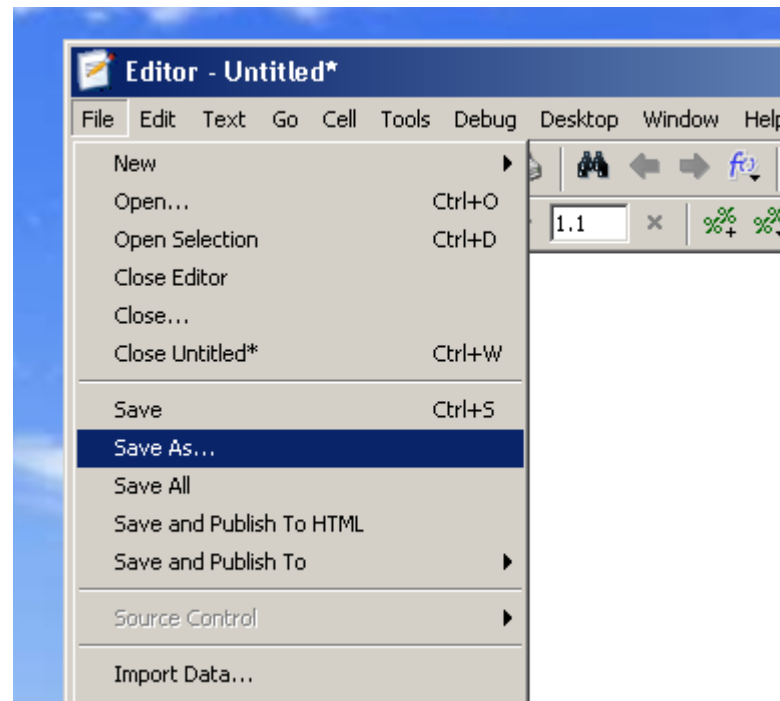
## 9. A new "editor" window should open; Enter your Matlab codes there



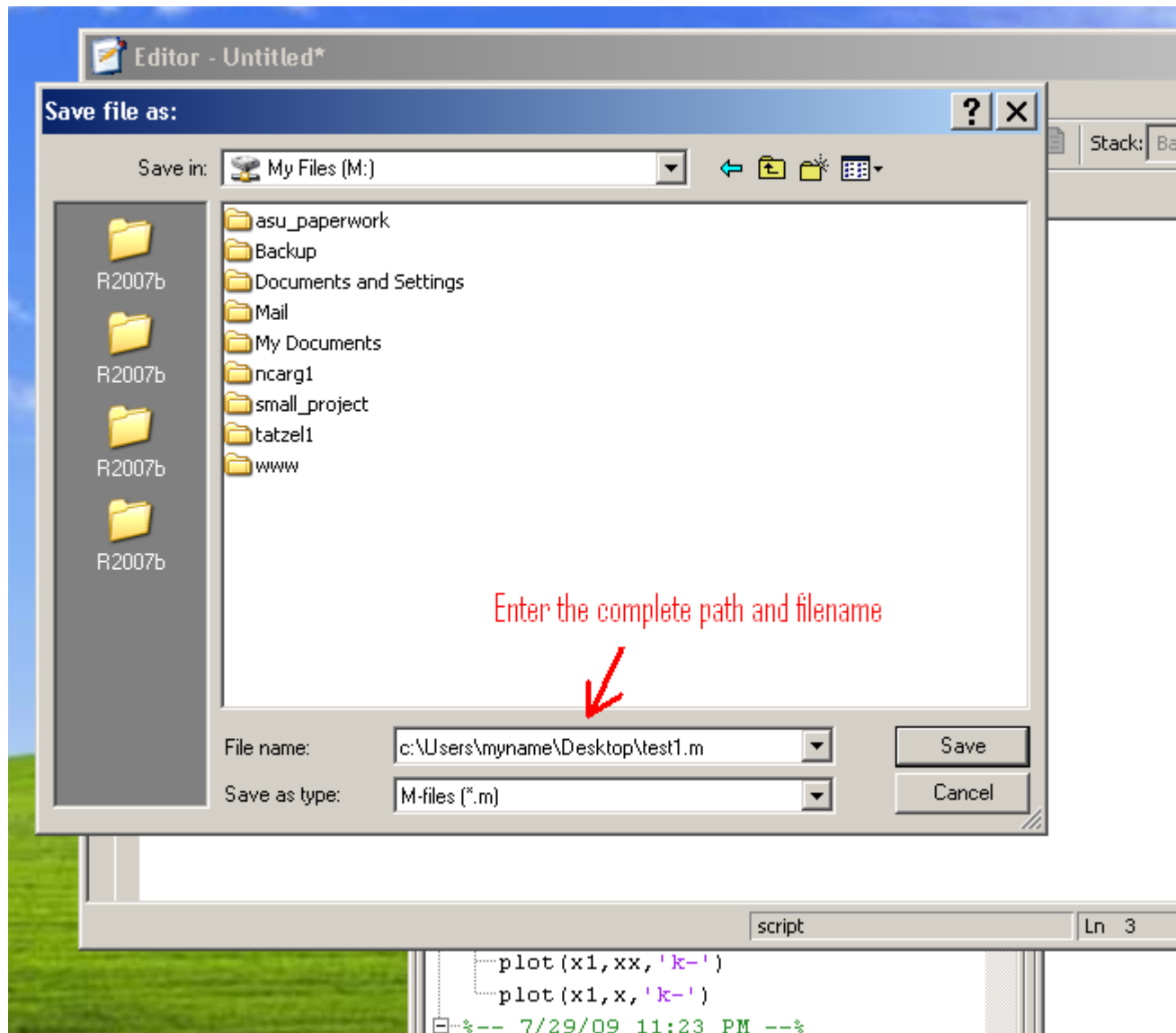
## 10. Like this ...



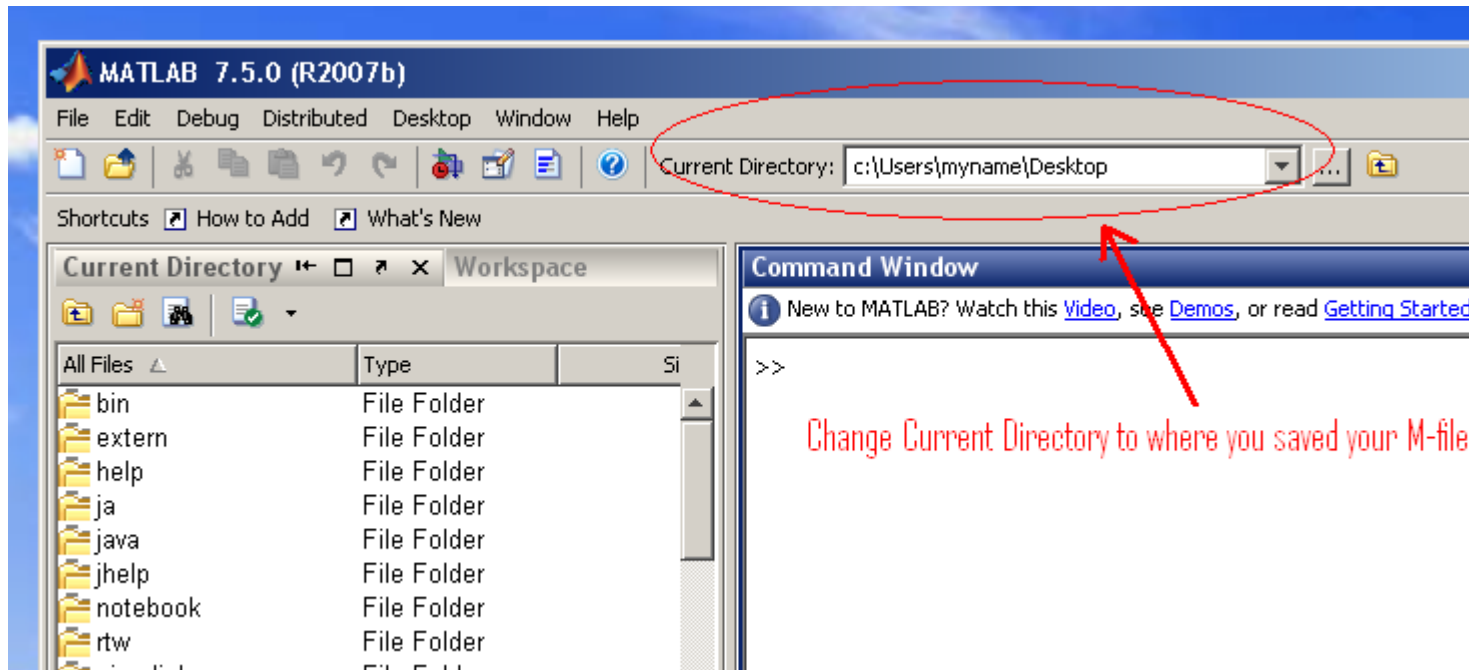
## 11. Then, save it



**12. Enter the complete path and filename at bottom (indicated by arrow) to save the M-file to your local disk. This is the most reliable way to save files.**



**13. To load a saved M-file back to Matlab, change "current directory" to where your M-file is located.**



Change Current Directory to where you saved your M-file