

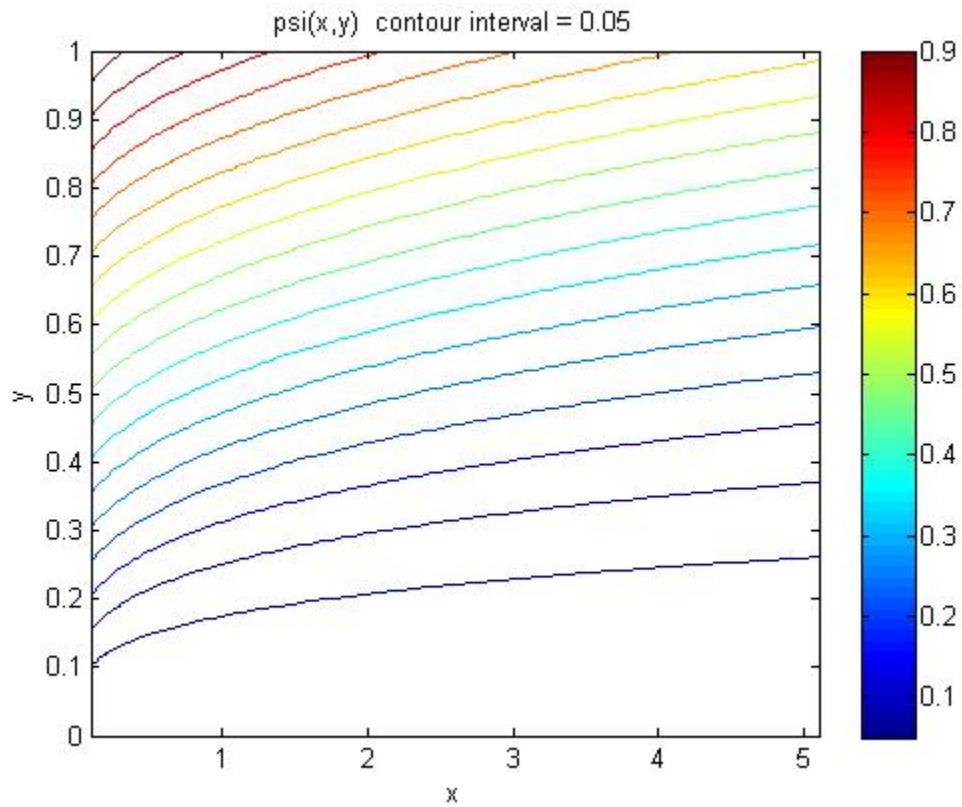
MAE571, Fall 2014, HW4 reference solutions

(a) See Fig. 8.8 in the textbook.

We use the setting of  $\nu = 0.01$  and  $U = 1$  for Part (b)-(e)

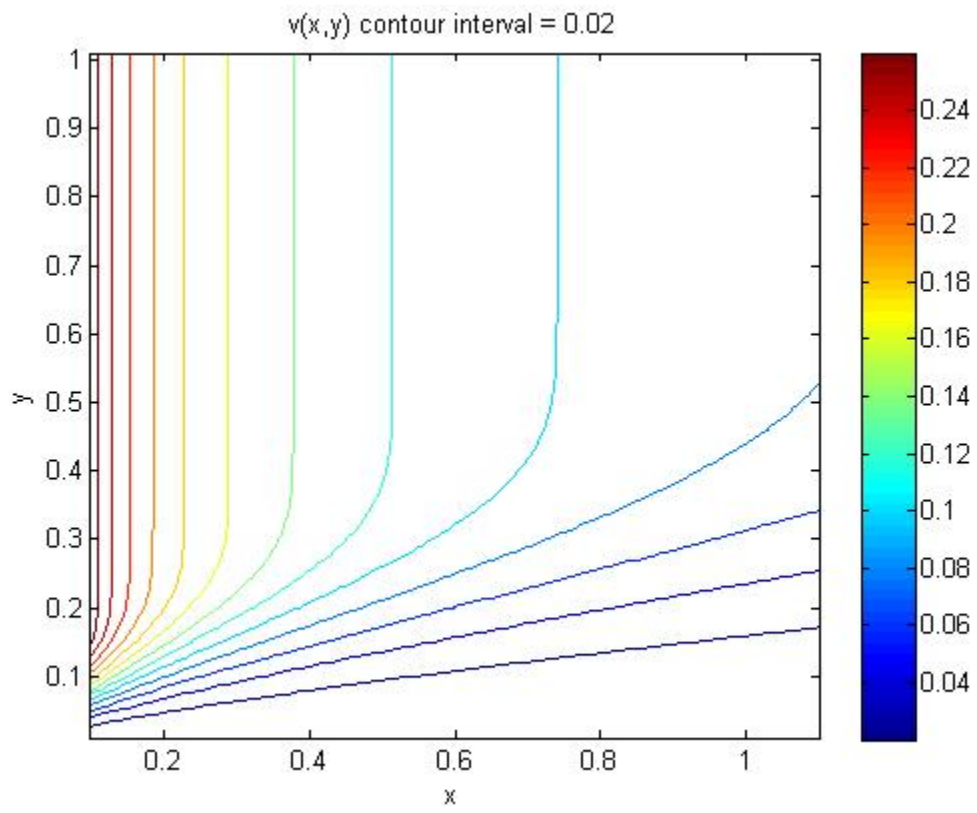
(b)

Contour plot of streamfunction  $\psi$



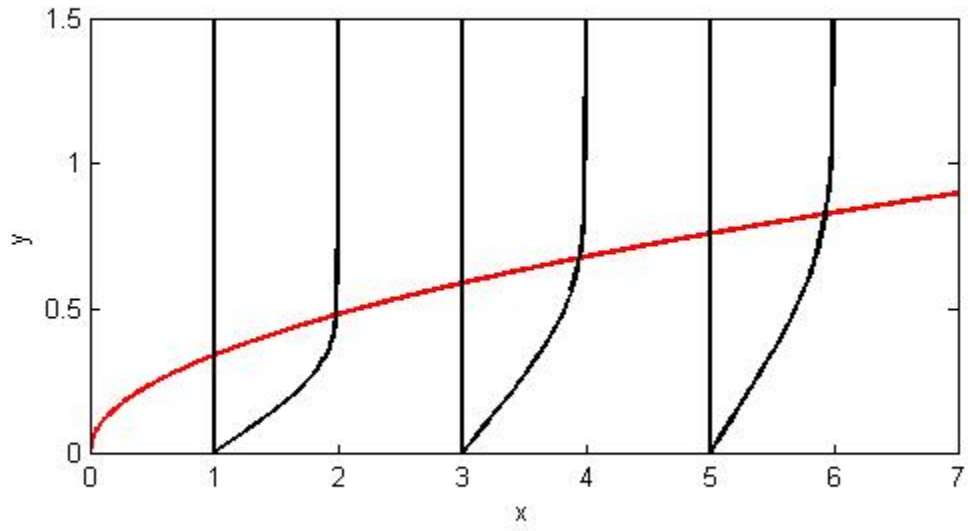
(b)

Contour plot of v-velocity



(c) & (d)

Red line is boundary layer thickness; Black lines are the profiles of  $u(y)$  at  $x = 1, 3,$  and  $5$ .



(e)

