

# **Using Matlab on ASU's application server**

**(For those who have never used it before)**

(Prepared by HPH, Aug 2009; revised Jan 2011)

# 1. Log on to My Apps (or <https://apps.asu.edu>) using ASURITE password

ASU Sign-In - Windows Internet Explorer

https://webapp3.asu.edu/myapps/login.aspx

ASU Sign-In

**ASU** ARIZONA STATE UNIVERSITY

Software. Anytime. Anywhere.

**My Apps**

**Login**

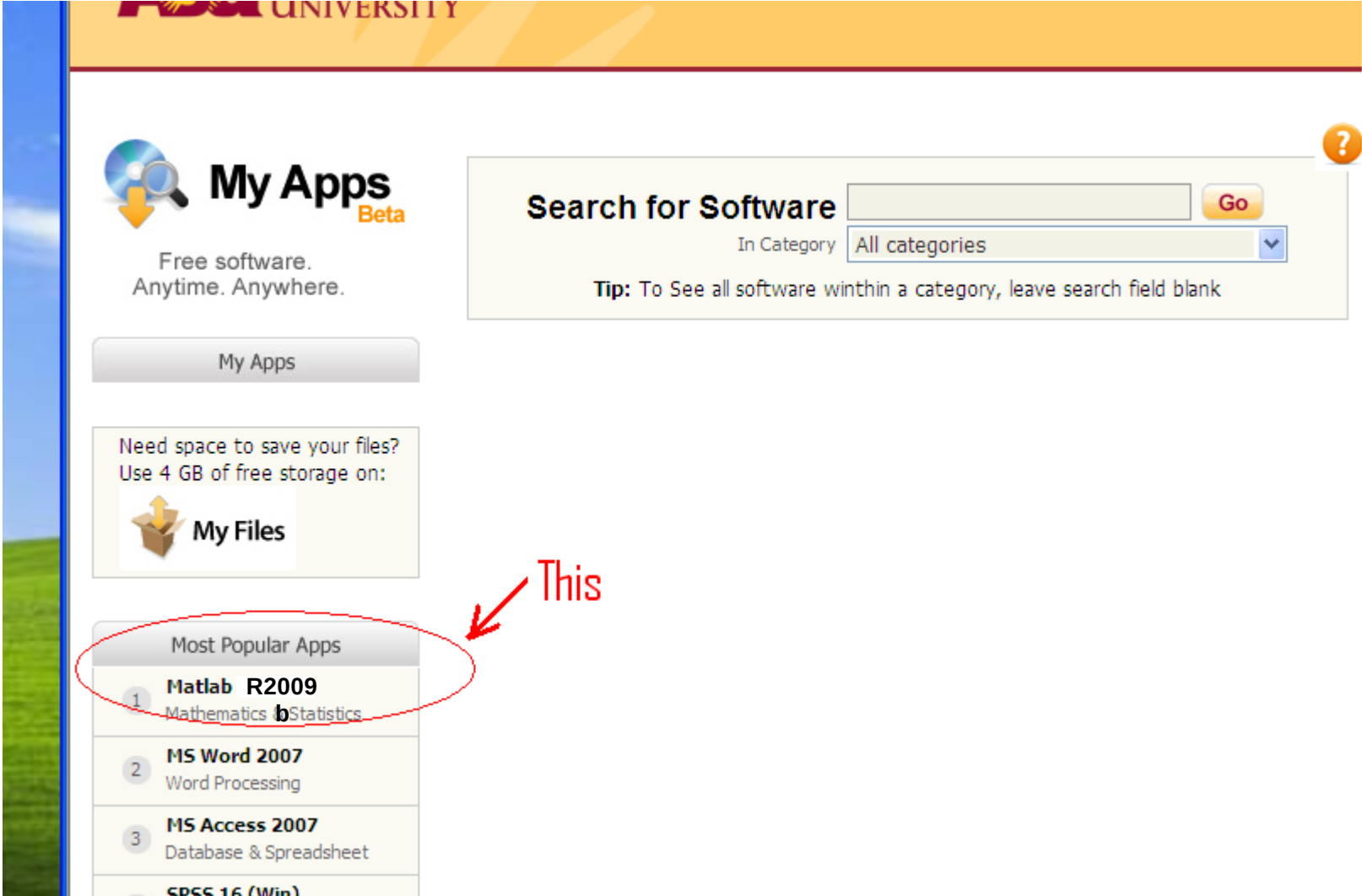
**ASURITE UserID:**   
[Activate](#) | [Request an ID](#)

**Password:**   
[Forgot ID / Password?](#)

**Need Help?**  
Email: [HelpDesk@asu.edu](mailto:HelpDesk@asu.edu), or call the Help Desk: (480)965-6500

[Copyright](#) | [Acceptable Use](#) | [Privacy](#) | [ASU Home](#)

## 2. Select "Matlab R2009b" or later versions

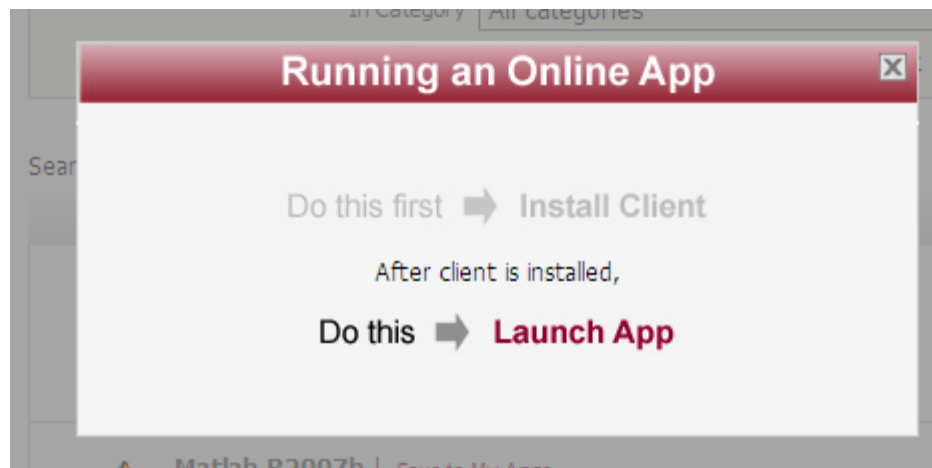
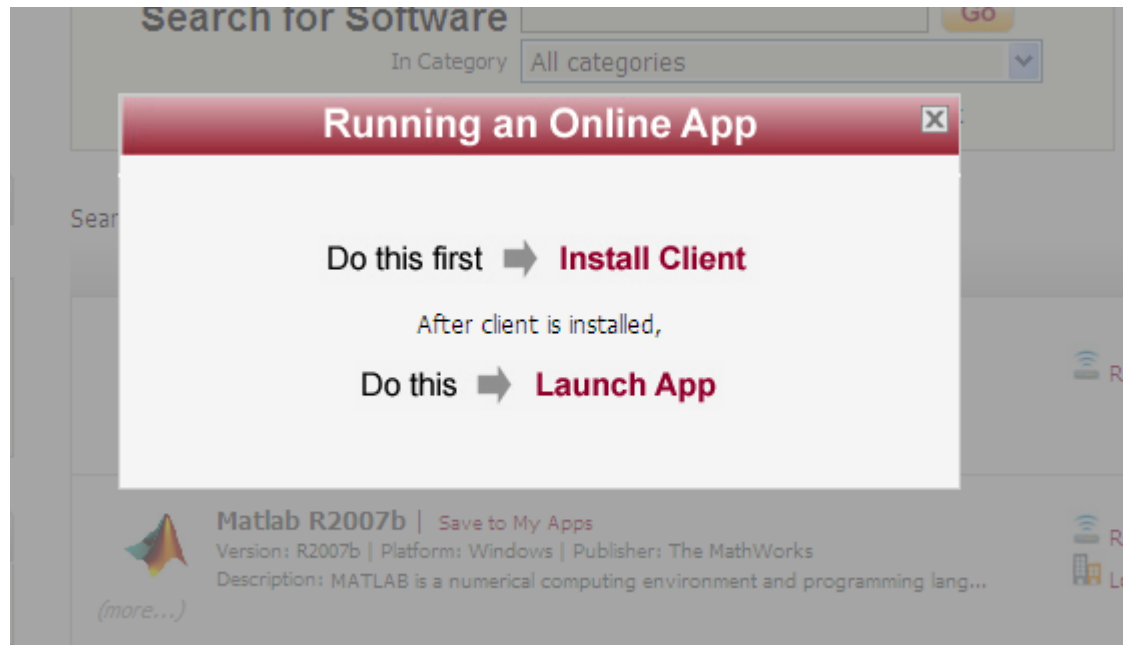


The screenshot shows the ASU My Apps Beta software portal. At the top, there is a search bar for software with a "Go" button and a dropdown menu for "In Category" set to "All categories". Below the search bar is a tip: "Tip: To See all software within a category, leave search field blank". On the left side, there is a "My Apps" button and a "My Files" section with a "Need space to save your files? Use 4 GB of free storage on:" message. The "Most Popular Apps" section is circled in red, and a red arrow points to it with the word "This". The list of popular apps includes:

Most Popular Apps	
1	<b>Matlab R2009</b> Mathematics & Statistics
2	<b>MS Word 2007</b> Word Processing
3	<b>MS Access 2007</b> Database & Spreadsheet
	<b>SPSS 16 (Win)</b>

**You may find multiple versions of Matlab on ASU's application portal.  
Matlab R2009b is out of date. Choose R2010b or R2011a instead.**

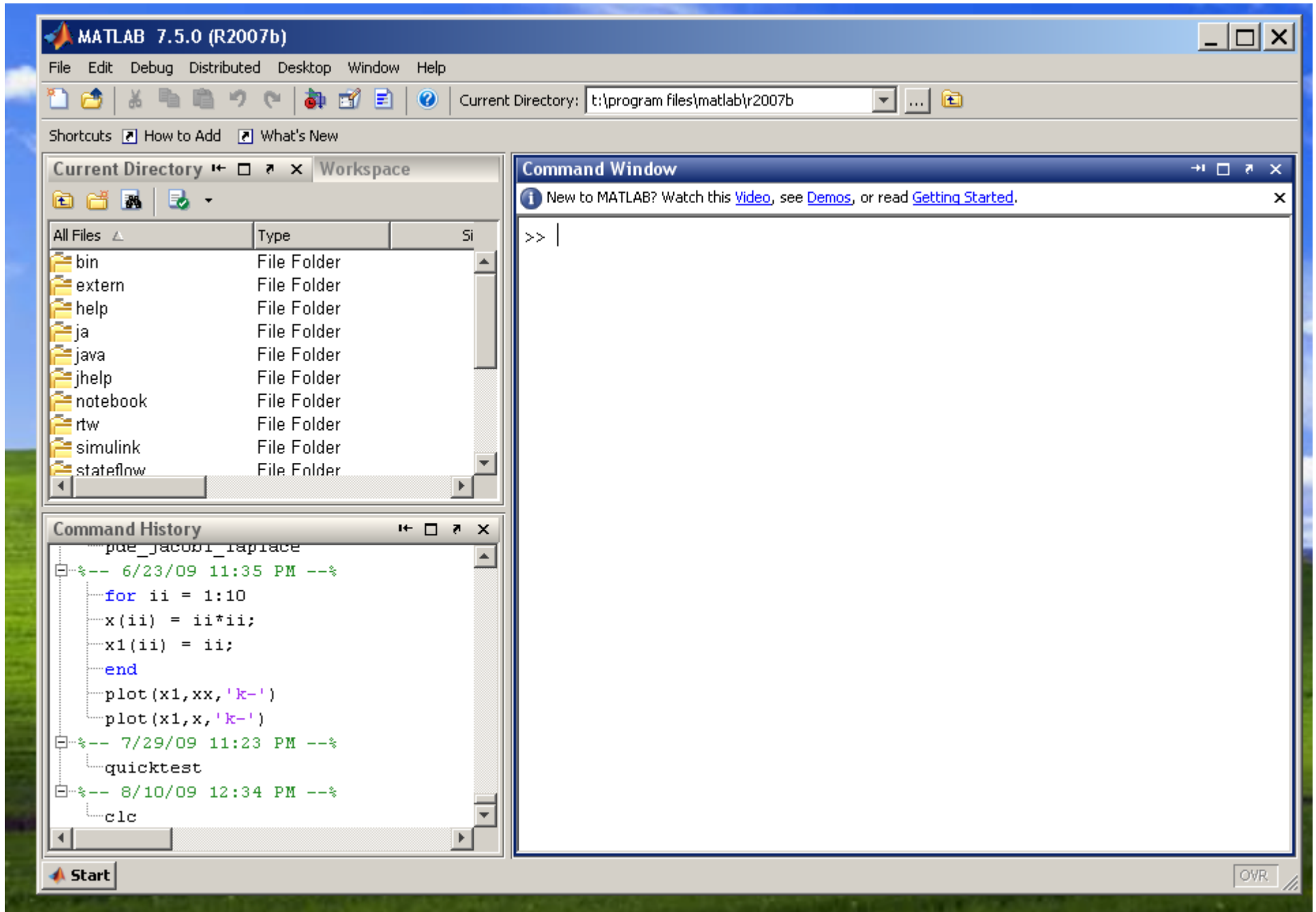
**3. First-time user might be asked to "Install Client". Install it, then launch the application.  
(This is for first-time users only.)**



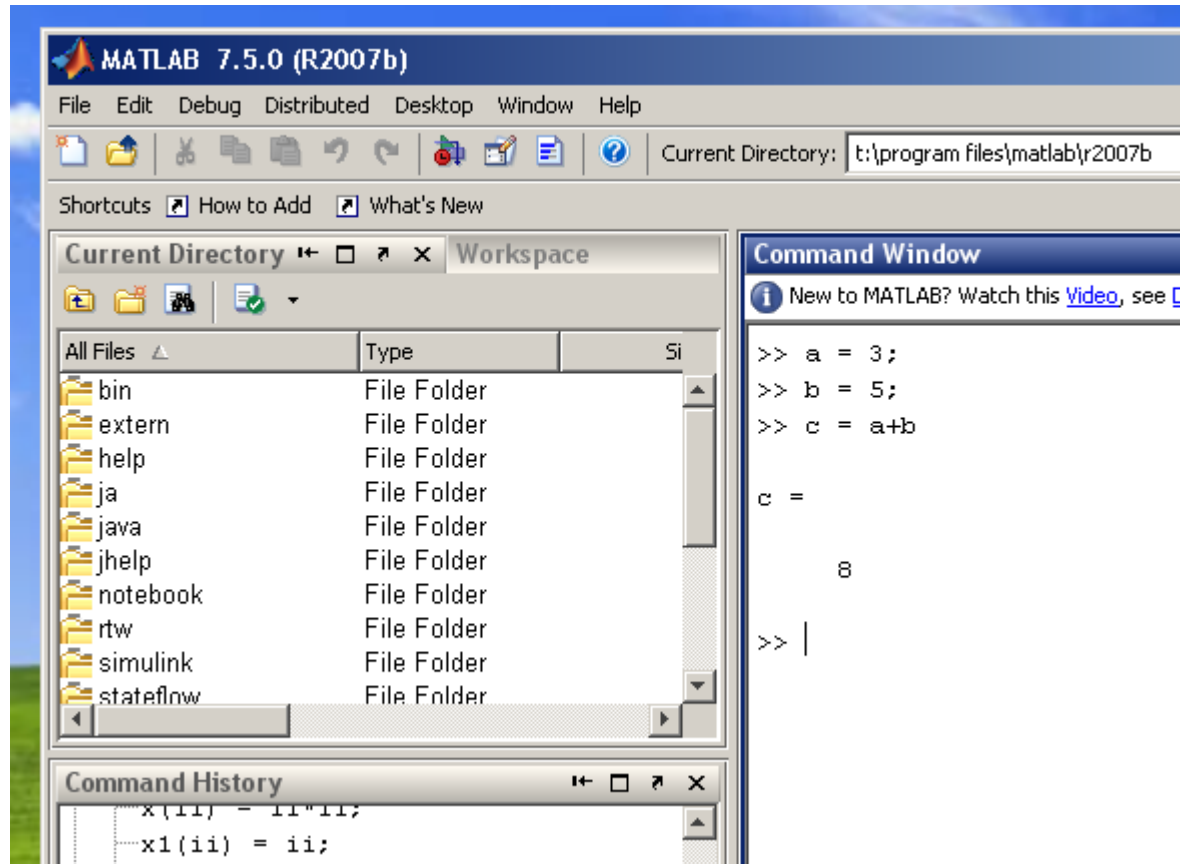
#### 4. Hit Continue at this prompt. There's not much you can do.



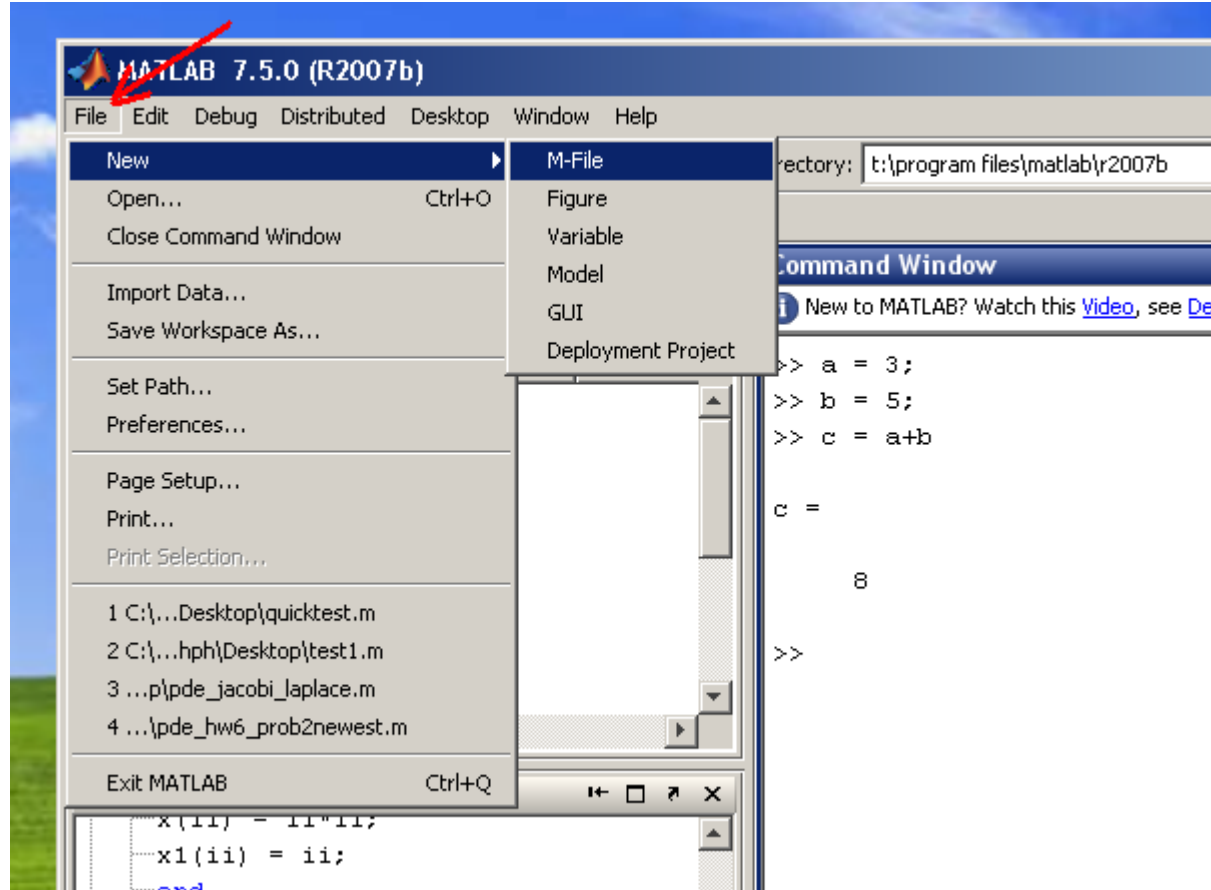
## 5. The main Matlab window



## 6. A quick example using the interactive mode

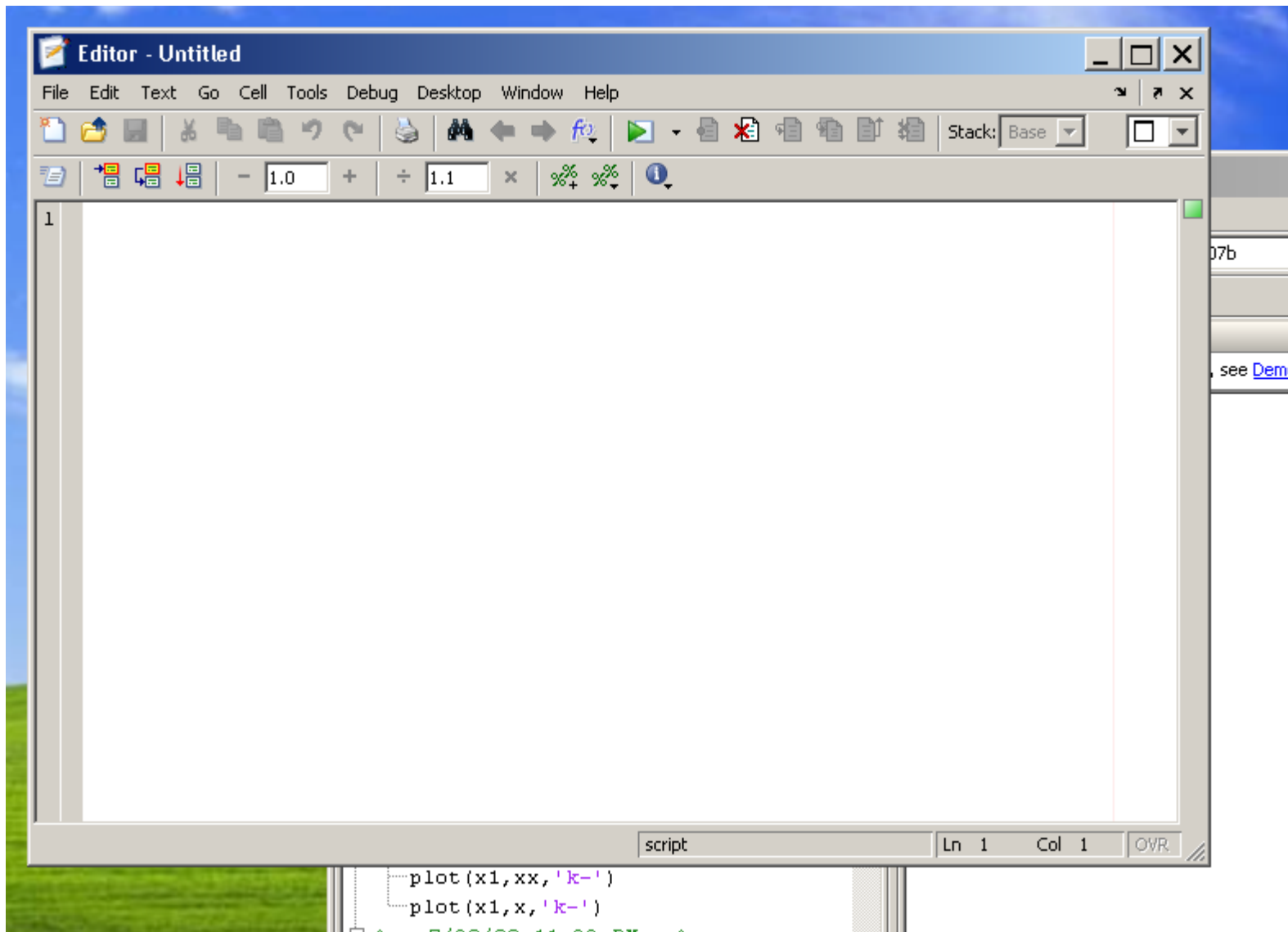


## 7. Edit an "M-file"

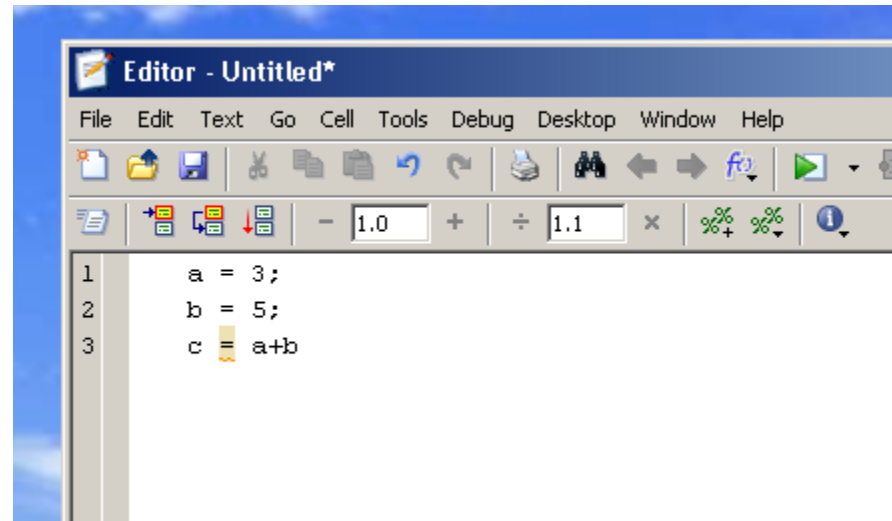




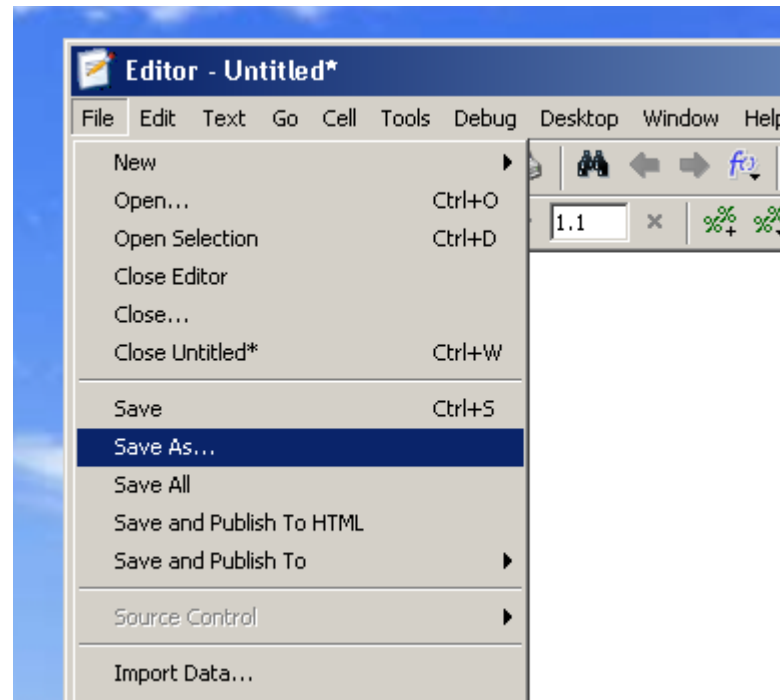
## 8. A new "editor" window should open; Enter your Matlab codes there



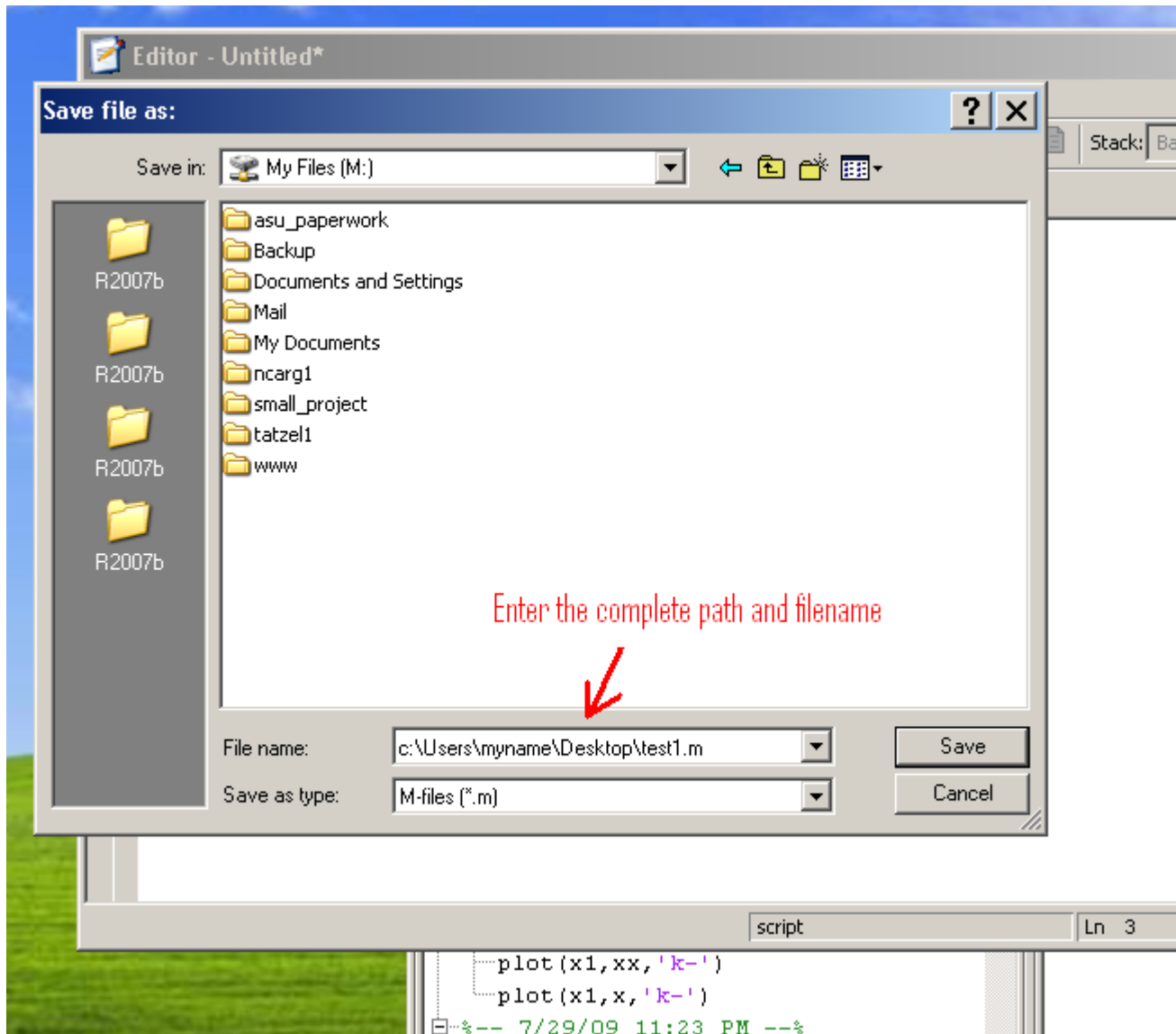
## 9. Like this ...



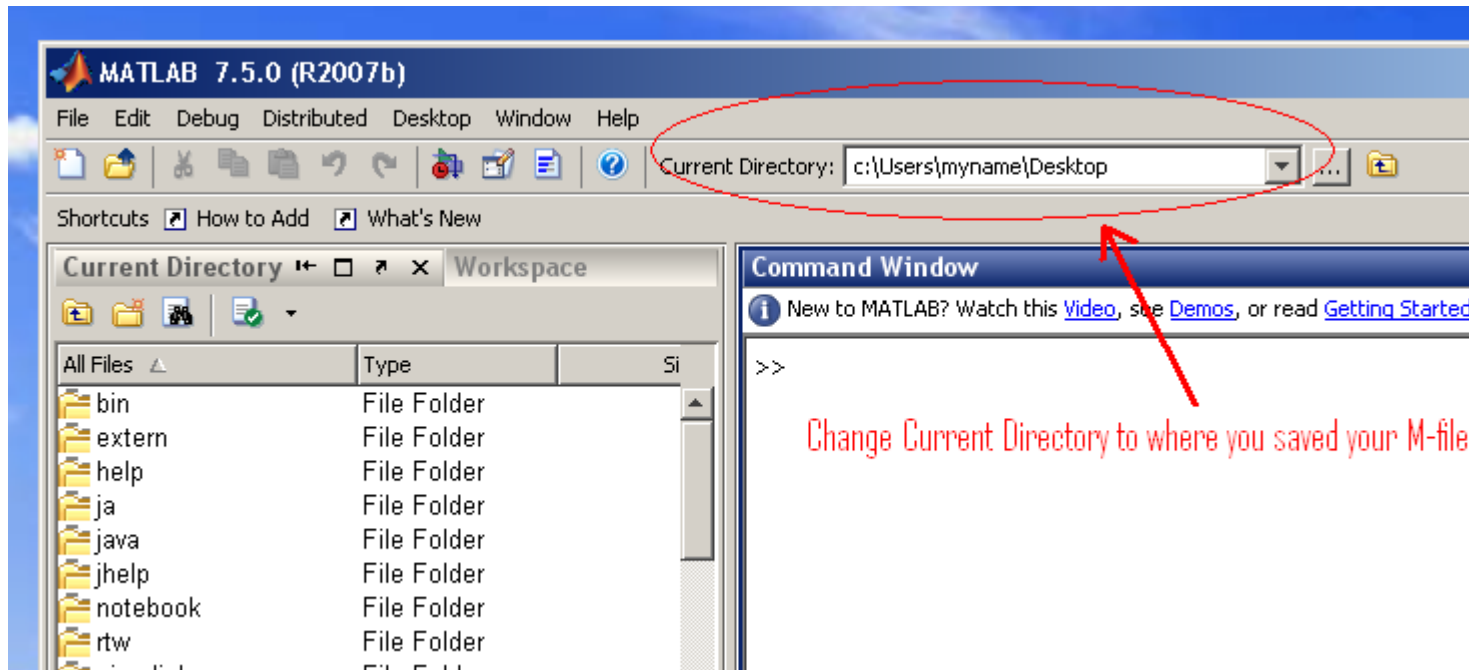
## 10. Then, save it



**11. Enter the complete path and filename at bottom (indicated by arrow) to save the M-file to your local disk. This is the most reliable way to save files.**



**12. To load a saved M-file back to Matlab, change "current directory" to where your M-file is located.**



Change Current Directory to where you saved your M-file