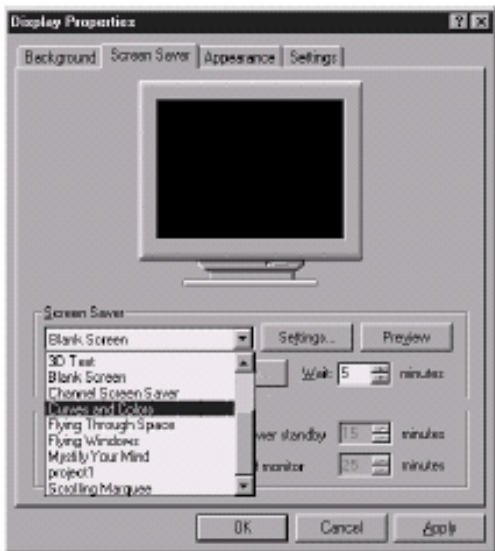


vb̄tRB %Zix Ki"b w̄b tm̄fvi

gvneje gfk©

~b̄b tm̄fvi n̄t"Q DB̄tŪv̄tRi m̄v̄t_ (w̄ksev Ab̄" th̄tKvb̄ Acv̄t̄i w̄Us w̄m̄t÷tgi m̄v̄t_) cvl qv̄ w̄kQȳt̄c̄M̄ḡ th̄_ t̄j v̄ w̄Kbv̄ w̄kQȳt̄b̄ K̄w̄úD̄Uvi Aē"eüZ̄ _v̄K̄t̄j w̄bR̄ t̄_ t̄K̄ P̄vj ȳnt̄q̄ hv̄q| ~b̄b tm̄fvi m̄x̄t̄Ū GB̄ ms̄Áv̄ t̄" evi t̄evaK̄wi c̄ŕqv̄Rb̄ w̄Qj̄ bv̄| t̄Kbbv̄ K̄ḡt̄ekx̄ mev̄B̄ ~b̄b tm̄fvī i P̄ḡK̄ŪK̄z̄D̄c̄t̄f̄v̄M̄ K̄t̄i _v̄t̄K̄b̄| th̄ Z̄w̄Ēj̄K̄ h̄v̄³Uv̄ ~b̄b tm̄fvī i c̄t̄q̄l̄ c̄ŕv̄b̄ K̄iv̄ n̄q̄ t̄m̄w̄ n̄t"Q Av̄cb̄vi ḡvb̄Ūt̄i i w̄c̄K̄P̄vi w̄J̄Dēt̄K̄ μ̄gv̄M̄Z̄ ḠKB̄ Q̄wē t̄" L̄v̄t̄b̄vi `īfb̄ m̄ŕ̄ ōev̄Ȳŕ̄ ev̄ R̄t̄j̄ h̄vl̄ qv̄ t̄_ t̄K̄ ī q̄l̄v̄ K̄iv̄| GB̄ w̄c̄K̄Ūvi w̄J̄Dē ew̄Ȳŕ̄ ev̄ R̄t̄j̄ h̄vl̄ qvī ē"vc̄vīw̄ Av̄m̄t̄j̄ c̄t̄īv̄t̄b̄v̄ t̄Ū. Ū w̄f̄w̄Ē̄K̄ Ūw̄ḡŕ̄v̄j̄ _t̄j̄ vī R̄b̄" ḠK̄īw̄ m̄gm̄"v̄ w̄Qj̄ th̄L̄v̄t̄b̄ N̄x̄Ūvī cī N̄x̄Ūv̄ ḠKB̄ t̄ḡb̄yc̄ŕ̄ w̄k̄ŕ̄ n̄Z̄ - d̄j̄ ~t̄" c̄ w̄c̄K̄P̄vi w̄J̄Dē ew̄Ȳŕ̄| ḠKB̄ K̄vī t̄b̄ w̄J̄w̄fī ḡ"v̄b̄q̄v̄t̄j̄ l̄ w̄f̄w̄l̄ t̄M̄gm̄ ē"env̄t̄ī D̄cī l̄ q̄w̄Ȳŕ̄ t̄" qv̄ _v̄t̄K̄| Av̄c̄b̄ w̄w̄m̄t̄c̄- t̄c̄ŕ̄c̄w̄l̄ŕ̄ W̄w̄q̄v̄j̄ M̄ ē. t̄_ t̄K̄ w̄"ŕ̄ tm̄fvī w̄m̄t̄j̄ ±̄ Kī t̄Z̄ cv̄ī t̄eb̄|



w̄f̄R̄q̄"v̄j̄ t̄ew̄m̄t̄K̄ ^Zix̄ K̄iv̄ t̄c̄M̄ḡ ~b̄b tm̄fvī w̄m̄t̄j̄ ē"env̄ī Kī t̄Z̄ cv̄ī t̄eb̄

w̄ēM̄Z̄ ēQ̄ī _t̄j̄ v̄t̄Z̄ w̄"ŕ̄b̄ tm̄fvī %Zix̄ K̄iv̄ c̄ŕ̄q̄ w̄k̄t̄ī ī c̄h̄v̄t̄q̄ t̄c̄ŕ̄ŕ̄Q̄ w̄m̄t̄q̄t̄Q̄| w̄_ w̄w̄ cv̄B̄c̄ t̄_ t̄K̄ īī" K̄t̄ī d̄v̄Bs̄ t̄Ūv̄÷vī mēB̄ Āŕ̄ŕ̄ŕ̄ n̄t̄q̄t̄Q̄ Gī w̄el̄ q̄ w̄m̄t̄j̄t̄ē| t̄m̄ h̄v̄B̄ t̄rv̄K̄, h̄w̄" Av̄c̄b̄ m̄w̄Z̄" m̄w̄Z̄" m̄R̄b̄k̄x̄j̄ w̄k̄Q̄ȳK̄ī t̄Z̄ P̄vb̄ Z̄t̄ē w̄b̄t̄RB̄ ē"env̄ī Kī t̄Z̄ cv̄t̄ī b̄ w̄b̄t̄Rī ^Zix̄ w̄"ŕ̄b̄ tm̄fvī | t̄c̄M̄ḡv̄t̄ī ī `w̄ŕ̄t̄K̄vb̄ t̄_ t̄K̄ t̄" L̄t̄j̄ , w̄"ŕ̄b̄ tm̄fvī Av̄m̄t̄j̄ ḠK̄Ūz̄w̄ēt̄k̄l̄ c̄wī w̄"ŕ̄Z̄ m̄vḡv̄j̄ t̄" qv̄ m̄v̄avī b̄ t̄c̄M̄ḡ, th̄_ t̄j̄ v̄ w̄K̄bv̄ ḡv̄D̄m̄ b̄v̄ŕ̄t̄j̄ ev̄ w̄k̄t̄ew̄"t̄c̄h̄ K̄ī t̄j̄ ēŪ̄ n̄t̄q̄ h̄v̄t̄ē - B̄Z̄" w̄" | Av̄ī m̄w̄Z̄" ē"vc̄vī n̄t"Q̄ Ḡait̄bī ḠK̄w̄ t̄c̄M̄ḡ K̄iv̄ w̄f̄R̄q̄"v̄j̄ t̄ew̄m̄t̄K̄ Ḡt̄" ev̄t̄ī t̄m̄v̄R̄v̄| th̄ t̄K̄vb̄ m̄v̄avī b̄ t̄c̄M̄ḡt̄gī ḡZ̄B̄ w̄f̄R̄q̄"v̄j̄ t̄ew̄m̄t̄Kī ḠK̄w̄ t̄c̄M̄ḡ w̄"ŕ̄b̄ tm̄fvī w̄m̄t̄j̄t̄ē K̄iv̄R̄ Kī t̄Z̄ cv̄t̄ī - t̄K̄ej̄ w̄k̄Q̄ȳw̄ēt̄k̄l̄ ē"vc̄vī Ab̄" f̄v̄t̄ē m̄vḡj̄ v̄t̄Z̄ n̄q̄| D̄" v̄nī Ȳ"ŕ̄fc̄ ḡv̄D̄m̄ b̄v̄ŕ̄t̄j̄ t̄c̄M̄ḡ ēŪ̄ n̄t̄q̄ h̄vl̄ qv̄| ēȲŕ̄v̄q̄ h̄vēvī Av̄t̄M̄ ḠK̄w̄ ē"vc̄vī - āt̄ī w̄b̄w̄"Q̄

Avcwb wFRq'vj teimK wKQyUv Rv'bb - wbt`b ct'¶ Ōdi gŌ, ŌBt'f'UŌ Gm'tei bvg i' tbt'Qb Ges UKUvK e'envi K'ti t'Qb |

tgBb dig tmUAvC Kiv: Avcbvi w`b tmfvi Avmt'j GKwU ŌŌStandard EXEŌŌ c'¶R± | cŌ_tgB Avcwb GKwU ŌŌStandard EXEŌŌ c'¶R± i' i" Ki"b Ges wbt'Pi gt'Zv K'ti di'tgi wWRvBb UvBg t'cŌcWUR ,t'j v e`t'j t'dj'p:

- 1 | ŌWindowStateŌ t'cŌcWURŌMaximizedŌ Ki"b |
- 2 | ŌBorderStyleŌ t'cŌcWURŌNoneŌ G tmU Ki"b |
- 3 | ŌBackColorŌ t'cŌcWURŌBlackŌ K'ij vi G tmU K'ip |

th'tnZiAvcwb Rv'bb th gvDm bvo't'j B ev wK'tev'W'¶ t'Kvb GKwU wK t'cŌn Ki't'j B w`b tmfvi e'U n'tq hvq, Ziv ŌMouseMoveŌ Ges ŌKeyPressŌ Bt'f'U wbt'Pi t'KwW Ab'hvqx GKwU K'ti ŌEndŌ t'÷Ut'g'U h'p' Ki"b th ,t'j v Av'g'v` i' GB K'vRwU K'ti t`te |

```
1 Dim nMouseCount As Integer
2 Private Sub Form_KeyPress(KeyAscii As Integer)
3     End
4 End Sub

5 Private Sub Form_MouseMove(Button As Integer, Shift As Integer, _
6     X As Single, Y As Single)
7     nMouseCount = nMouseCount + 1
8     If nMouseCount > 5 Then End
9 End Sub
```

t'KwW j vBb b'af 1,6 Ges 7 j '¶' Ki"b | GLv'tb Av'g'v GKwU MYbvK'vi x t'f'wi t'qej ev K'vD'Uvi e'envi K'ti wQ hv't'Z K'ti gvDm g'f't'g't'Ui c'Âg ev'ti t'cŌMŌg'wU e'U nq | Gi gv'tb GB bq th gvDm t'K c'U'P'evi b'vo'v't'Z n'te | G't'¶'t'¶ g'tb i vL't'Z n'te th, DBt'Ōv'R w`b tmfvi P'j vK'vj xb mg'tq w`b tmfvi t'cŌMŌg'w'U i K'v'Q tek K't'q'K'wU gvDm g'f't'g'U Bt'f'U c'w'vq | Avi t'm'K'vi t'bb GB e'e`v |

Gwb't'g'kb thvM Kiv: G Ae`v'q t'cŌMŌg'wU ivb Ki't'j i' ay'g'v'Ō GKwU e`v'¼ w`b t`L't'Z cv'teb, th'wU gvDm bvo't'j ev wK'tev'W'¶ t'Kvb GKwU ev'Ub t'cŌn Ki't'j P't'j hv'te | GB w`b tmfvi wU t'Z'gb Av'K'l'Ōx'q wK'Q'y'bq | G't'Z GK'U'z Gwb't'g'kb thvM Ki't'j tek nq | Av'g'v GKwU Timer control Ges wK'Q'y'Image control w`t'q K'vRwU t'm'ti t'dj't'Z c'w'wi | b'x't'Pi t'÷c ,t'j v Ab'hvqx i' i" Ki"b:

- 1 | di't'gi g't'a` ev w`t'Ki U'j e- t`_t'K GKwU Uv'Bgvi Ges GKwU B't'g'R K't'U'v'j thvM Ki"b |
- 2 | B't'g'R K't'U'v'j i t'cŌcWUR t`_t'K ŌPictureŌ t'cŌcWURŌ cv't'ki 0..0 ev'Ub'wU w'K'K Ki"b |
- 3 | GLb t'j w'w w'c'K'P'vi W'w'q'j M e- Avmt'j t'Kvb GKwU Q'we e'f'DR K'ti I t'cb Ki"b |
- 4 | G'f'v'te Avi I K't'q'K'wU Q'we h'p' Ki"b |
- 5 | G'ev'ti Uv'Bgvi K't'U'v'j i t'cŌcWUR DBt'Ōw'U L'j'p |
- 6 | ŌPictureŌ t'cŌcWURŌ200 t'Z w'bw`Ō Ki"b Ges ŌEnabledŌ t'cŌcWURŌTrue Ki"b |

3 b=^ j vBbU j " Ki "b, tcMöguU tj w BtftUB tkl ev eÜ ntq hvq hw` tcMöguU
 Avti K w Bb ÷ "vY ev Dcw wZ BtZvgta "B ivb Ki tZ _vtK | GB AskwU LyeB _i "Zpb tKbbv
 DBtÜvR KLtbv KLtbv GKwU Pj gvb w b tmfv i KtqK Kwc Bb ÷ "vY Pj yKti t`q |
 DBtÜvRi mrt_ tevSvov: Gmbtgkb tktl Avi l wKQyKvW Avcbvi mshjP Ki tZ nte hvZ GuU
 wKvK fvte w b tmfvi wntmte KvR Ki tZ cvti | Avcbw Rvbb th wWmfc-tcÜcwUP w b
 tmfvi Wqyj M e- wU AvcbvK w b tmfvi KbwdMvi Ges wöFD Ki tZ t`q |
 cÜZwU t`q t` DBtÜvR Avcbvi tcMötg wtkl wKQyKgvÜ cwWtq _vtK | bxtPi
 CheckCommandLine diskbuU hjP Kti Avgi v wKvK fvte e`vci wU mgvav Ki tZ cwi |

```

1 Sub CheckCommandLine()
2   Dim sCmdLine As String
3   sCmdLine = Trim$(LCase$(Command$))

4   'RUNNING AS A SCREEN SAVER
5   If sCmdLine = "/s" Or sCmdLine = "" Then
6     Exit Sub
7   End If

8   'RUNNING IN SETUP (CONFIG) MODE
9   If sCmdLine = "/c" Then
10    MsgBox "Config Screen Not Available"
11    End
12  End If

13  'RUNNING IN PREVIEW MODE
14  If Left$(sCmdLine, 2) = "/p" Then
15    'parameter can be retrieved with Val(Mid$(sCmdLine,3))
16    End
17  End If

18 End Sub

```

tkl Zt AvcbvK hv Ki tZ nte Zv nt"Q tcMöguU K=úvBj Kti (File tgbZ Make
 project.exe...), Zvi G- tUbkb t`K tZ cwi eZxZ Ki "b Ges GuUk Kwc Kti DBtÜvR
 wWti ±ix tZ wbtq tc ÷ Ki "b | GtZ GuUk Avcbw `qsmuqfvte DBtÜvRi wWmfc-tcÜcwUPi
 w b tmfvi U`vte t` LtZ cvteb |

w b tmfvi - ewK K_v: GB w b tmfvi wU Lye PgKcÜ bv ntj l Avcbw GtK Avcbvi cieZx®
 w b tmfvi evbvtbv QvP ev tdg wntmte e`envi Ki tZ cviteb | bxtRi mwöxj Zv, tcMögs Ávb
 BZ`w` e`envi Kti Mto Zj tZ cvti b Avcbvi wR` w b tmfvi mgwó | Zte eZgvtb tek wKQy
 `qsmuq Uj ev mdUl q`vi cvl qv hvq th _tj v wtkl wKQyGmbtgkb e`envi Kti mntR Avcbvi
 Rb` w b tmfvi %Zix Kti w` tZ cvti | wKŠ` Zvi cÜqvM Lye mxigZ etj wbtRi w b tmfvi
 wbtRB `Zix Kti tbqv Avgvi gtb nq tekx AvKI Öxq |